



SL60

Linear stem actuator – Thrust force 600N – Max stroke 750 mm

Machine composed by an electrically operated geared motor and a thrust actuator, which can be assembled, to reduce warehousing costs.



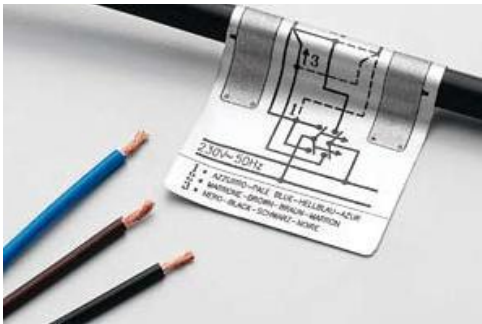
Rapid hooking system between electrically operated geared motor and thrust actuator.



Easy and fast assembly and adjustment thanks to the pathways for the connection of the strong steel support.

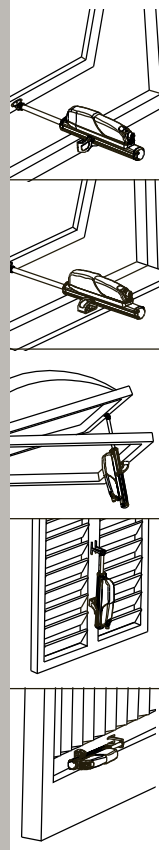
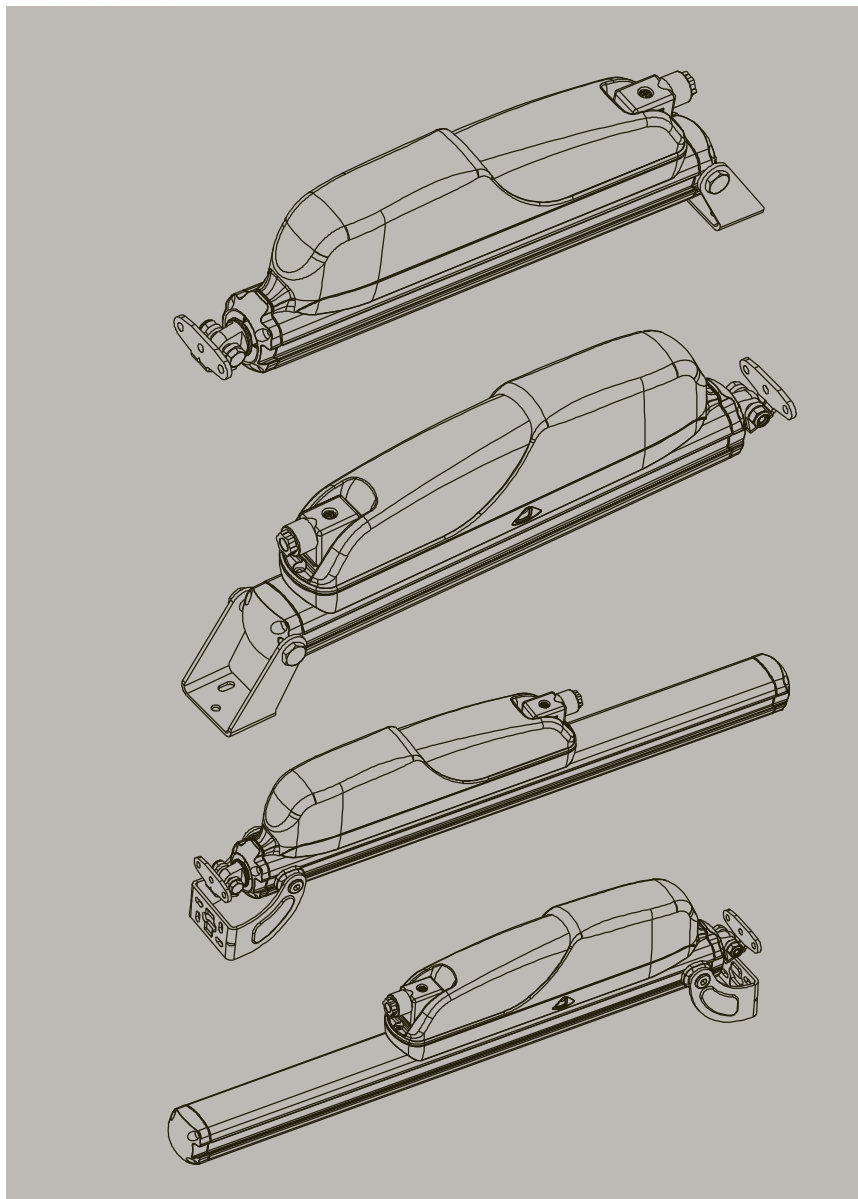


Electric parts in double insulation (no ground cable required).



High protection degree IP 55.





Description for technical specifications

<p>Linear electric actuator TOPP model SL60 with self-aligning tilting movement, complete with support and fitting accessory for top hung window. Operation at 230V~ 50Hz, or at 24V d.c. Max. traction and thrust force of 600N. Pre-set for the connection in parallel of two or more actuators, with end of stroke microswitches.</p> <p>Available strokes: 180 – 230 – 350 - 550 – 750 mm. CE marked device complying with the following directives: EEC 89/336, EEC 73/23 and following amendments.</p>



Danish Seller
Swissdoor ApS
 Stenhuggervej 2
 5471 Soendersoe
 Denmark
 VAT nr.: 32084222
 Tlf. nr.: +45 8628 0000
 mail@swissdoor.dk
 www.swissdoor.dk