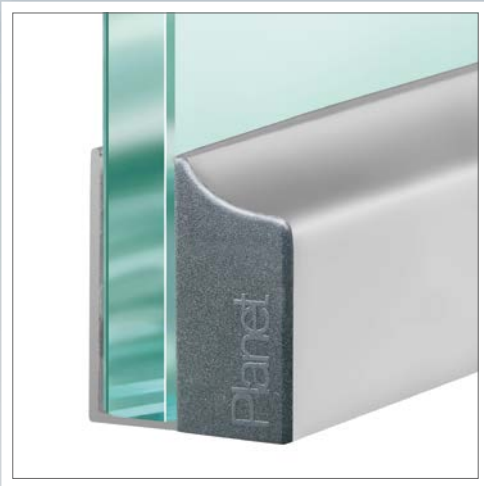
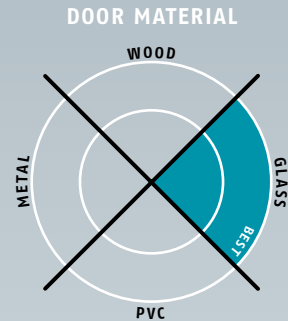


# Planet KG-A8 | A10 → 16,5 x 35 mm | ↓ 18 mm | ≤ 48 dB



## Main features

- Seal height up to ↓ 18 mm
- Acoustic insulation up to ≤ 48 dB in case of an optimal sealing
- For one and double leaf folding all-glass doors, with a glass thickness of 8 to 10 mm
- Planet KG-A8 | A10 to be attached and glued
- Planet drop-down seal cemented in A8 / A10 protection profile
- Unilateral and soundless release, silent seal
- Due to parallel drop-down no trailing on the floor
- Automatic compensation at inclined floors
- High-grade silicone lip, simple lift height adjustment
- Can be shortened up to the next shorter length on stock
- 7 years warranty

## Versions / options

- Planet KG-A8 | A10 → RD ≤ 48 dB, smoke-shielding
- Planet KG-A8 | A10 → FH+RD ≤ 48 dB, fire-retardant + smoke-shielding
- Option bevel lip ≤ 44 dB, up to ↓ 22 mm, for uneven floors
- Special versions on request

## Surfaces

- Protection profile silver anodised EV1
- Protection profile stainless steel satin anodised (option)

## Door types with Planet KG-A8 | A10

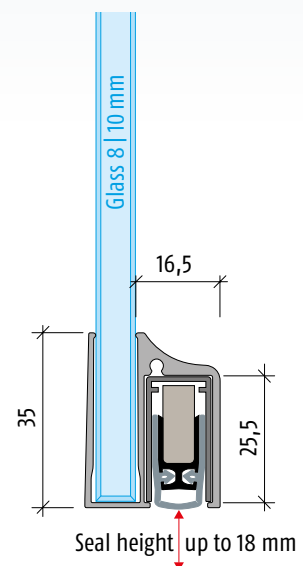


## More functions



## Technical specifications

Profile material	aluminum, → 16,5 x 35 mm, silver anodised EV1 or stainless steel satin anodised
Seal profile	high-grade silicone or high-grade self-extinguishing silicone
Seal height	up to ↓ 18 mm
Sound absorption value	up to ≤ 48 dB at 7 mm space to the floor; up to ≤ 46 dB at 14 mm space to the floor
Lift height adjustment	on the release knob with an Allen key 3 mm
Lengths in stock	459, 584, 709, 834, 959, 1084, 1209, 1334, 1459 mm
Special lengths	on request up to 6000 mm, sliding doors up to 1600 mm
Release	unilaterally on hinge side
Can be shortened	up to the maximum of 125 mm
Fastening	to be glued
Frame protector plate	stainless, hammer fixed, 20 x 20 mm
Test approvals	on request





Planet KG-A8 | A10, attached and glued



Planet KG-A8 | A10, attached and glued release side



Planet KG-A8 | A10, with cover plate



**Option:** Planet KG-A8 | A10, bevel lip for **uneven floors**



**Accessories:** Planet frame protector plate, type 1 (stainless), 20 x 20 mm



Set of Planet cover plates Planet KG

### Order specifications

<p><b>Planet KG-A8   A10 → RD</b> ≤ 48 dB → silver anodised EV1 incl. set of cover plates and frame protector plate, type 1</p>	Prod. code 38xxx-A8   A10*
<p><b>Planet KG-A8   A10 → FH+RD</b> ≤ 48 dB → silver anodised EV1 incl. set of cover plates and frame protector plate, type 1</p>	Prod. code 39xxx-A8   A10*

\* xxx = refer to price list for profile length

### Accessories | Options

<p><b>Planet KG-A8   A10</b> → stainless steel satin anodised</p>	<p>Prod. code (A8) 900900 Prod. code (A10) 900901</p>
<p><b>Planet frame protector plate</b> type 1 (stainless); possible type 2/3/4/5 → refer to chapter Accessories   Options</p>	Prod. code 900014
<b>Cut the Planet to fix dimension</b>	Prod. code 900225
<b>Set of Planet cover plates Planet KG</b>	Prod. code 900252
<b>Sliding door</b>	Prod. code 900908
<b>Bevel lip</b> (≤ 44 dB, up to ↓ 22 mm) DIN L or DIN R	refer to price list, options / supplements

### Advertising text



<p><b>Planet KG-A8   A10 → RD (smoke-shielding)</b> ≤ 48 dB</p> <p>Automatic door drop-down seal <b>Planet KG-A8   A10 → RD</b> ≤ 48 dB, unilateral release with parallel drop-down and automatic compensation at inclined floor, protection profile silver anodised EV1 or stainless steel satin anodised, to be attached and glued, seal height up to ↓ 18 mm. Lip from silicone. Protection profile and profile made from aluminum → 16,5 x 35 mm, incl. cover plate on lock side for folding doors.</p>
---

### Advertising text



<p><b>Planet KG-A8   A10 → FH+RD (fire-retardant + smoke-shielding)</b> ≤ 48 dB</p> <p>Automatic door drop-down seal <b>Planet KG-A8   A10 → RD+FH</b> ≤ 48 dB, appropriate for fire-retardant and smoke-shielding doors, sound absorption value SK 1-3, unilateral release with parallel drop-down and automatic compensation at inclined floor, protection profile silver anodised EV1 or stainless steel satin anodised, to be attached and glued, seal height up to ↓ 18 mm. Lip from silicone. Protection profile and profile made from aluminum → 16,5 x 35 mm, incl. cover plate on lock side for folding doors.</p>
---