

Planet KR Flush Bolt

Profile dimension 13 and 20 mm

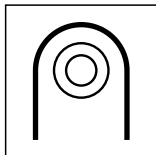
Flush bolt for bottom and top with double-wing / folding doors

Main features

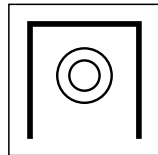
- continuous drop-down seal Planet
- sound protection
- appropriate for Planet profile dimension 13 and 20 mm
- with integrated plastic guide
- execution for DIN L and DIN R
- Planet drop-down seal prepared to fix dimension
- adjustable locking bolt

Executions

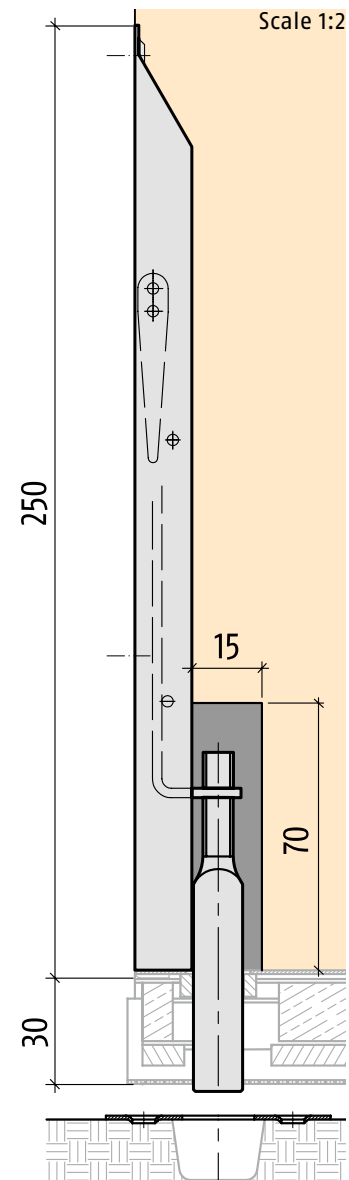
- length × width × depth:
250 × 15 × 15 mm
250 × 18 × 17 mm
- surface:
brushed, mat nickel-plated
- lock plate shape:
15 mm = round
18 mm = angular



round lock plate
15 mm



angular lock plate
18 mm



Advertising text

Planet KR Flush bolt

Planet KR Flush bolt, width 15 or 18 mm, appropriate for Planet profile dimensions 13 and 20 mm, bolt cross section 5 × 13 mm, adjustable in length, for continuous sealing lips, with lever.

Technical specifications

Material:	steel sheet
Dimensions:	L 250 × W 15 × D 15 mm, round end lock plate L 250 × W 18 × D 17 mm, angular end lock plate
Lift height of bolt:	up to -15 mm
Adjustment of bolt lift height:	-10 mm / +15 mm
Surface:	brushed, mat nickel-plated
Door seal:	DIN L and R

Planet KR Flush Bolt

Profile dimension 13 and 20 mm

Flush bolt for bottom and top with double-wing / folding doors

Order specification

- **Planet KR lower Flush bolt**, incl. strike plate
width 15 mm, Part number 4010
width 18 mm, Part number 4020
- **Planet KR upper Flush bolt**, incl. strike plate
width 15 mm, Part number 4011
width 18 mm, Part number 4021

Attention: order the drop-down seal with
fix measure and DIN L or R



Planet KR Flush bolt



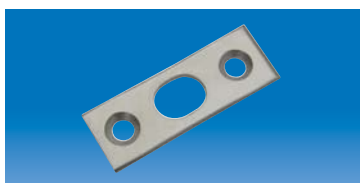
Planet KR round lock plate, width 15 mm with Planet HS in the stationary wing



Planet flush bolt, to be used on top and bottom, angular end lock plate width 18 mm and round end lock plate 15 mm. Refer to chapter flush bolt | drill hole



Strike plate for lower flush bolt



Strike plate for upper flush bolt



Planet floor recess plate, alternatively appropriate to lower flush bolt, refer to pages 2.10.1-8