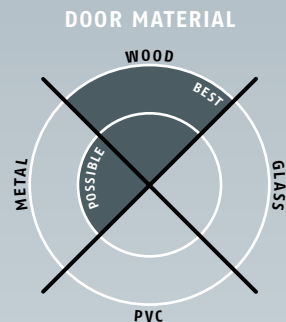


Planet BL (Radiation protection)

→ 13 x 39 mm | ↓ 18 mm | ≪ 31 dB



Main features

- Seal height up to ↓ 18 mm
- Appropriate for radiation protection doors
- Unilateral and soundless release, silent seal
- Due to parallel drop-down no trailing on the floor
- Automatic compensation at inclined floors
- Simple lift height adjustment
- Produced on fix measure from 335 up to 6000 mm
- 7 years warranty

Versions / options

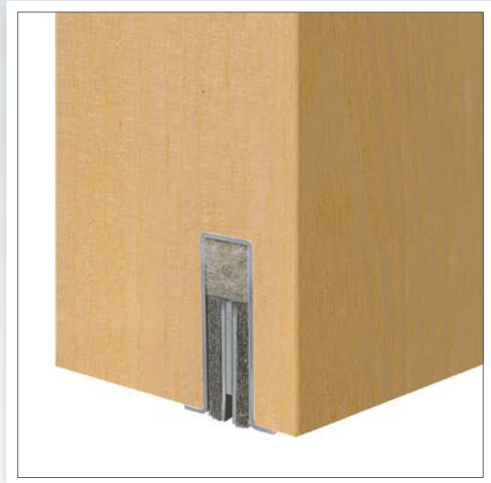
- With lead lining from 0,5 up to 4 mm (choose same lead thickness as in the door)
- Prepared with drilling $\varnothing 5 \times 13$ mm (only possible with lead lining up to 2 mm, min. length 400 mm)

Door types with Planet BL



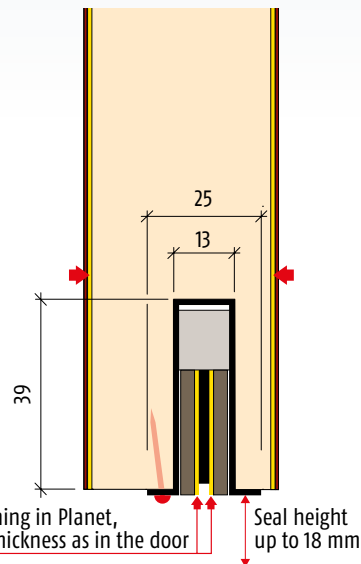
Double leaf doors → refer to chapter Accessories | Flush bolt, drilling

More functions



Technical specifications

Lead lining	0,5 1,0 1,5 2,0 3,0 4,0 mm (choose same lead thickness as in the door)
Profile material	aluminum, → 13 x 39 mm
Groove size	□ width 13,1 mm with depth 40 mm
Seal height	up to ↓ 18 mm
Lift height adjustment	on the release knob with an Allen key 3 mm
Lengths	335–6000 mm on fix measure per meter
Release	unilaterally on hinge side
Can be shortened	yes, on request only
Fastening	unilaterally from the bottom with nails / screws available with customer
Frame protector plate	stainless, hammer fixed, 20 x 20 mm
Test approvals	on request



Versions | Options | Accessories



Profile Planet BL



Option: Planet BL with Planet drill hole $\varnothing 5 \times 13$ mm for flush bolt (only possible with lead lining up to 2 mm, min. length 400 mm), driving bar rods → refer to chapter Accessories | driving bar rods



Accessories: Planet frame protector plate, type 1 (stainless), 20 x 20 mm

For radiation protection doors with lead lining from 0,5 mm up to 4 mm

Order specifications

Planet BL → 0,5 mm including frame protector plate, type 1	Prod. code 26005 per meter
Planet BL → 1,0 mm including frame protector plate, type 1	Prod. code 26010 per meter
Planet BL → 1,5 mm including frame protector plate, type 1	Prod. code 26015 per meter
Planet BL → 2,0 mm including frame protector plate, type 1	Prod. code 26020 per meter
Planet BL → 3,0 mm including frame protector plate, type 1	Prod. code 26030 per meter
Planet BL → 4,0 mm including frame protector plate, type 1	Prod. code 26040 per meter

Accessories | Options

Planet frame protector plate type 1 (stainless); possible type 2/3/4/5 → refer to chapter Accessories Options	Prod. code 900014
--	-------------------

Advertising text



Planet BL

Automatic door drop-down seal **Planet BL**, for acoustic insulation and radiation protection doors. Release on hinge side with automatic compensation in case of an inclined floor, seal height up to ↓ **18 mm**, flush at bottom to put in groove. With lead lining from → **0,5 up to 4,0 mm**. Fastening on the bottom, Aluminum profile → **13 x 39 mm**.