



**Locks for
wooden
frames**





Infilare 291

The mortice lock series 291 has obtained the product certification **038BE/0** (except for the version with roller and deadbolt only).

It is available in different finishing and locking versions. In conjunction with ISEO cylinders it provides high security to the doors.

Main features:

- steel closed lockcase on all sides: this prevents profile machining chips from entering the mechanism;
- two throws standard deadbolt or two throws anti-drill and anti-saw standard deadbolt;
- reversible latchbolt or roller;
- center distance mm 85;
- 6 fixing holes for escutcheon and security plates;
- front plate rounded or squared mm 22, in: gold plated brass 24 KT, polished and painted brass, chrome-plated and polished brass, nickel-plated and brushed brass, stainless steel;
- front plate rounded or squared mm 24, in stainless steel;
- operating with European profile cylinder or double handle follower.

		<p>CERTIFICAZIONE DI PRODOTTO PRODUCT CERTIFICATION</p>	
<p>802 N°0004 804 N°0002 805 N°0001 806 N°0003 807 N°0005</p> <p>Membre degli Accordi di Mutuo Riconoscimento CE e ISO Signatory of EA and ISO Mutual Recognition Agreements</p>		<p></p>	
<p>CERTIFICATO N° CERTIFICATE N°</p>		<p>038BE/0</p>	
<p>PER LA CONCESSIONE DEL DIRITTO DI USO DEL MARCHIO DI CONFORMITÀ ICIM / FOR THE AUTHORIZATION TO USE ICIM MARK OF CONFORMITY ALL'AZIENDA / TO THE FIRM</p>			
<p>ISEO SERRATURE S.p.A. Via San Girolamo, 13 PISOGLNE (BS) ITALY</p>			
<p>UNITA' OPERATIVE / OPERATIVES UNITS</p>			
<p>PER I SEGUENTI PRODOTTI / FOR THE FOLLOWING PRODUCTS</p>			
<p>SERRATURA INFILARE AD AZIONAMENTO MECCANICO CON CILINDRO A PROFILO EUROPEO MECHANICALLY OPERATED MORTICE LOCK WITH EUROPEAN CYLINDER</p>			
<p>CON DENOMINAZIONE COMMERCIALE / WITH TRADE NAMES</p>			
<p>Serie 291 "Infilare Chiusa"</p>			
<p>Modelli: 2911*5***.</p>			
<p>Con varianti di: Tipo di frontale, forma catenaccio, entrata, finitura e materiale del frontale.</p>			
<p>CONFORMEMENTE ALLA NORMA ED AL DOCUMENTO NORMATIVO ICIM IN COMPLIANCE WITH THE STANDARD AND WITH ICIM NORMATIVE DOCUMENT</p>			
<p>UNI EN 12209:05 - ICIM 70R029</p>			
<p>CON CLASSIFICAZIONE / WITH CLASSIFICATION</p>			
<p> 3 C 8 1 0 D 1 P A 2 0 </p>			
<p>Prima Emissione First issue</p>	<p>Emissione corrente Current issue</p>	<p>Data di scadenza Expiring date</p>	<p>ICIM S.p.A. Il Presidente Ing. Fulvio Battino</p>
<p>23/10/2009</p>	<p>23/10/2009</p>	<p>22/10/2012</p>	



Closed lockcase and fixing holes



Anti-drill and anti-saw deadbolt

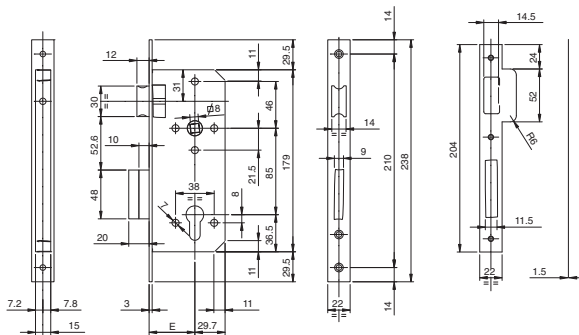


Code
Status
Single package
Multiple package
Min. ord.

Infilare 291



Cylinder to be ordered separately



CLOSED-CASE mortice lock operating with European profile cylinder. Two mm 10 throws.

Reversible deadbolt. Handle follower mm 8. Center distance mm 85.

6 fixing holes for escutcheons and security plates. Striking plate. Fixing screws.

FOREND, BRASS GOLD PLATED 24 KT MM 22 SQUARE EDGE

Backset mm 40	29110540A	D	1	10	10
Backset mm 45	29110545A	D	1	10	10
Backset mm 50	29110550A	D	1	10	10
Backset mm 60	29110560A	D	1	10	10
Backset mm 70	29110570A	D	1	10	10



FOREND, POLISHED AND PAINTED BRASS, MM 22 SQUARE EDGE

Backset mm 40	29110540L	D	1	10	10
Backset mm 45	29110545L	D	1	10	10
Backset mm 50	29110550L	C	1	10	10
Backset mm 60	29110560L	B	1	10	10
Backset mm 70	29110570L	D	1	10	10



FOREND, CHROME-PLATED AND POLISHED BRASS, MM 22 SQUARE EDGE

Backset mm 40	29110540K	D	1	10	10
Backset mm 45	29110545K	D	1	10	10
Backset mm 50	29110550K	D	1	10	10
Backset mm 60	29110560K	D	1	10	10
Backset mm 70	29110570K	D	1	10	10



FOREND, NICKEL-PLATED SATIN BRASS, MM 22 SQUARE EDGE

Backset mm 40	29110540N	D	1	10	10
Backset mm 45	29110545N	D	1	10	10
Backset mm 50	29110550N	D	1	10	10
Backset mm 60	29110560N	D	1	10	10
Backset mm 70	29110570N	D	1	10	10



FOREND, BRONZED-PLATED AND BRUSHED BRASS, MM 22 SQUARE EDGE

Backset mm 40	29110540B	D	1	10	10
Backset mm 45	29110545B	D	1	10	10
Backset mm 50	29110550B	C	1	10	10
Backset mm 60	29110560B	C	1	10	10
Backset mm 70	29110570B	D	1	10	10





Code
Status
Single
package
Multiple
package
Min. ord.

Infilare 291



FOREND, STAINLESS STEEL, MM 22 SQUARE EDGE

Backset mm 40	291105402	C	1	10	10
Backset mm 45	291105452	C	1	10	10
Backset mm 50	291105502	B	1	10	10
Backset mm 60	291105602	B	1	10	10
Backset mm 70	291105702	D	1	10	10

PACKED IN NYLON BAGS with 25 pieces each.

FOREND, STAINLESS STEEL, MM 22 SQUARE EDGE

Backset mm 40	291105402N	B	1	25	25
Backset mm 45	291105452N	D	1	25	25
Backset mm 50	291105502N	B	1	25	25
Backset mm 60	291105602N	A	1	25	25
Backset mm 70	291105702N	D	1	25	25



FOREND, STAINLESS STEEL, MM 24 SQUARE EDGE

Backset mm 40	291145402	D	1	10	10
Backset mm 45	291145452	D	1	10	10
Backset mm 50	291145502	D	1	10	10
Backset mm 60	291145602	D	1	10	10
Backset mm 70	291145702	D	1	10	10

PACKED IN NYLON BAGS with 25 pieces each.

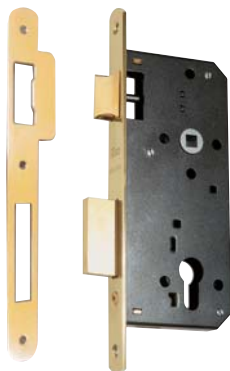
FOREND, STAINLESS STEEL, MM 24 SQUARE EDGE

Backset mm 40	291145402N	C	1	25	25
Backset mm 45	291145452N	D	1	25	25
Backset mm 50	291145502N	D	1	25	25
Backset mm 60	291145602N	C	1	25	25
Backset mm 70	291145702N	D	1	25	25

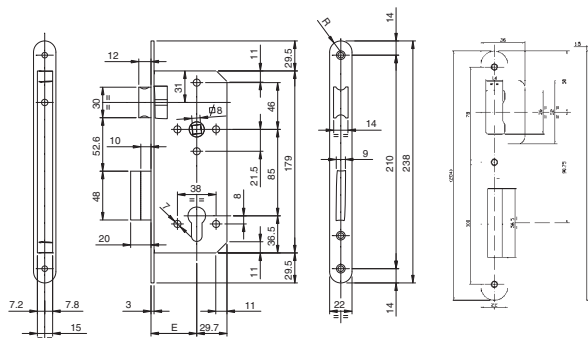


Code
Status
Single package
Multiple package
Min. ord.

Infilare 291



Cylinder to be ordered separately



CLOSED-CASE mortice lock operating with European profile cylinder. Two mm 10 throws. Reversible deadbolt. Handle follower mm 8. Center distance mm 85. 6 fixing holes for escutcheons and security plates. Striking plate. Fixing screws.

FOREND, BRASS. GOLD PLATED 24 KT MM 22 ROUND EDGE



Backset mm 40	29111540A	D	1	10	10
Backset mm 45	29111545A	D	1	10	10
Backset mm 50	29111550A	D	1	10	10
Backset mm 60	29111560A	D	1	10	10
Backset mm 70	29111570A	D	1	10	10

FOREND, POLISHED AND PAINTED BRASS, MM 22 ROUND EDGE



Backset mm 40	29111540L	D	1	10	10
Backset mm 45	29111545L	D	1	10	10
Backset mm 50	29111550L	D	1	10	10
Backset mm 60	29111560L	D	1	10	10
Backset mm 70	29111570L	D	1	10	10

FOREND, CHROME-PLATED AND POLISHED BRASS MM 22 ROUND EDGE



Backset mm 40	29111540K	D	1	10	10
Backset mm 45	29111545K	D	1	10	10
Backset mm 50	29111550K	D	1	10	10
Backset mm 60	29111560K	D	1	10	10
Backset mm 70	29111570K	D	1	10	10

FOREND, NICKEL PLATED SATIN BRASS MM 22 ROUND EDGE



Backset mm 40	29111540N	D	1	10	10
Backset mm 45	29111545N	D	1	10	10
Backset mm 50	29111550N	D	1	10	10
Backset mm 60	29111560N	D	1	10	10
Backset mm 70	29111570N	D	1	10	10

FOREND, BRONZED-PLATED AND BRUSHED BRASS, MM 22 ROUND EDGE

Backset mm 40	29111540B	D	1	10	10
Backset mm 45	29111545B	D	1	10	10
Backset mm 50	29111550B	D	1	10	10
Backset mm 60	29111560B	D	1	10	10
Backset mm 70	29111570B	D	1	10	10



Code
Status
Single
package
Multiple
package
Min. ord.

Infilare 291



FOREND, STAINLESS STEEL MM 22 ROUND EDGE

Backset mm 40	291115402	D	1	10	10
Backset mm 45	291115452	D	1	10	10
Backset mm 50	291115502	D	1	10	10
Backset mm 60	291115602	D	1	10	10
Backset mm 70	291115702	D	1	10	10

PACKED IN NYLON BAGS with 25 pieces each.

FOREND, STAINLESS STEEL MM 22 ROUND EDGE

Backset mm 40	291115402N	D	1	25	25
Backset mm 45	291115452N	D	1	25	25
Backset mm 50	291115502N	D	1	25	25
Backset mm 60	291115602N	B	1	25	25
Backset mm 70	291115702N	D	1	25	25



FOREND, STAINLESS STEEL MM 24 ROUND EDGE

Backset mm 40	291155402	D	1	10	10
Backset mm 45	291155452	D	1	10	10
Backset mm 50	291155502	D	1	10	10
Backset mm 60	291155602	D	1	10	10
Backset mm 70	291155702	D	1	10	10

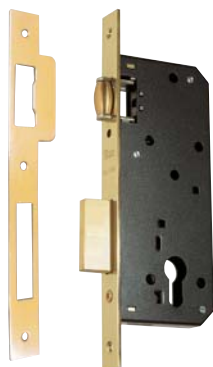
PACKED IN NYLON BAGS with 25 pieces each.

FOREND, STAINLESS STEEL MM 24 ROUND EDGE

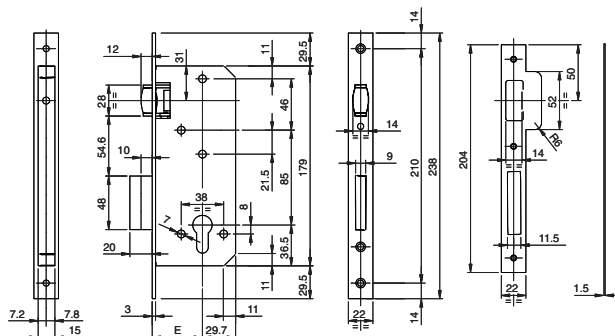
Backset mm 40	291155402N	D	1	25	25
Backset mm 45	291155452N	D	1	25	25
Backset mm 50	291155502N	D	1	25	25
Backset mm 60	291155602N	D	1	25	25
Backset mm 70	291155702N	D	1	25	25

Code
Status
Single
package
Multiple
package
Min. ord.

Infilare 291



Cylinder to be ordered separately



CLOSED-CASE mortice lock operating with European profile cylinder. Two mm 10 throws. Adjustable roller. 6 fixing holes for escutcheons and security plates. Striking plate. Fixing screws.



FOREND, BRASS. GOLD PLATED 24 KT MM 22 SQUARE EDGE

Backset mm 40	29120540A	D	1	10	10
Backset mm 45	29120545A	D	1	10	10
Backset mm 50	29120550A	D	1	10	10
Backset mm 60	29120560A	D	1	10	10
Backset mm 70	29120570A	D	1	10	10



FOREND, POLISHED AND PAINTED BRASS, MM 22 SQUARE EDGE

Backset mm 40	29120540L	B	1	10	10
Backset mm 45	29120545L	D	1	10	10
Backset mm 50	29120550L	C	1	10	10
Backset mm 60	29120560L	D	1	10	10
Backset mm 70	29120570L	D	1	10	10



FOREND, BRASS. GOLD PLATED 24 KT MM 22 SQUARE EDGE

Backset mm 40	29120540K	D	1	10	10
Backset mm 45	29120545K	D	1	10	10
Backset mm 50	29120550K	D	1	10	10
Backset mm 60	29120560K	D	1	10	10
Backset mm 70	29120570K	D	1	10	10



FOREND, NICKEL-PLATED SATIN BRASS, MM 22 SQUARE EDGE

Backset mm 40	29120540N	B	1	10	10
Backset mm 45	29120545N	C	1	10	10
Backset mm 50	29120550N	B	1	10	10
Backset mm 60	29120560N	B	1	10	10
Backset mm 70	29120570N	D	1	10	10



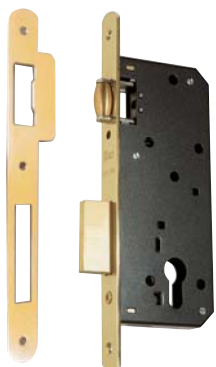
FOREND, BRONZED-PLATED AND BRUSHED BRASS, MM 22 SQUARE EDGE

Backset mm 40	29120540B	D	1	10	10
Backset mm 45	29120545B	D	1	10	10
Backset mm 50	29120550B	D	1	10	10
Backset mm 60	29120560B	D	1	10	10
Backset mm 70	29120570B	D	1	10	10

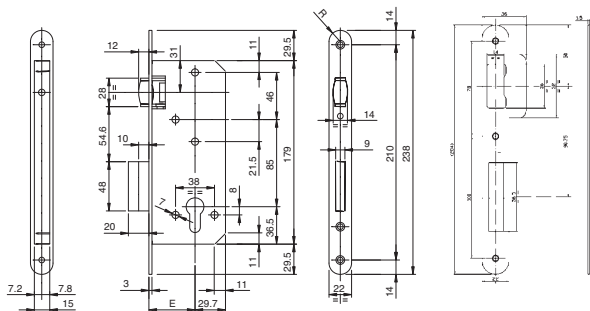
Locks for wooden frames

Code
Status
Single package
Multiple package
Min. ord.

Infilare 291



Cylinder to be ordered separately



CLOSED-CASE mortice lock operating with European profile cylinder. Two mm 10 throws. Adjustable roller. 6 fixing holes for escutcheons and security plates. Striking plate. Fixing screws.

FOREND, BRASS. GOLD PLATED 24 KT MM 22 ROUND EDGE



Backset mm 40	29121540A	D	1	10	10
Backset mm 45	29121545A	D	1	10	10
Backset mm 50	29121550A	D	1	10	10
Backset mm 60	29121560A	D	1	10	10
Backset mm 70	29121570A	D	1	10	10

FOREND, POLISHED AND PAINTED BRASS, MM 22 ROUND EDGE



Backset mm 40	29121540L	D	1	10	10
Backset mm 45	29121545L	D	1	10	10
Backset mm 50	29121550L	D	1	10	10
Backset mm 60	29121560L	D	1	10	10
Backset mm 70	29121570L	D	1	10	10

FOREND, CHROME-PLATED AND POLISHED BRASS MM 22 ROUND EDGE



Backset mm 40	29121540K	D	1	10	10
Backset mm 45	29121545K	D	1	10	10
Backset mm 50	29121550K	D	1	10	10
Backset mm 60	29121560K	D	1	10	10
Backset mm 70	29121570K	D	1	10	10

FOREND, NICKEL-PLATED SATIN BRASS, MM 22 ROUND EDGE



Backset mm 40	29121540N	D	1	10	10
Backset mm 45	29121545N	D	1	10	10
Backset mm 50	29121550N	C	1	10	10
Backset mm 60	29121560N	D	1	10	10
Backset mm 70	29121570N	D	1	10	10

FOREND, BRONZED-PLATED AND BRUSHED BRASS, MM 22 ROUND EDGE

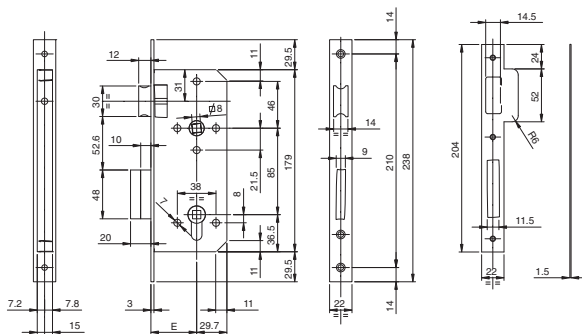
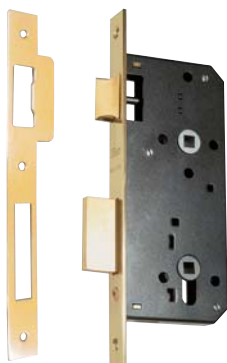


Backset mm 40	29121540B	D	1	10	10
Backset mm 45	29121545B	D	1	10	10
Backset mm 50	29121550B	D	1	10	10
Backset mm 60	29121560B	D	1	10	10
Backset mm 70	29121570B	D	1	10	10



Code
Status
Single package
Multiple package
Min. ord.

Infilare 291



CLOSED-CASE mortice lock operating with European profile cylinder. Two mm 10 throws.
Double handle follower mm 8 for locked/unlocked function. Center distance mm 85.
6 fixing holes for escutcheons and security plates. Striking plate. Fixing screws.



FOREND, BRASS. GOLD PLATED 24 KT MM 22 SQUARE EDGE

Backset mm 40	29110540AS	D	1	10	10
Backset mm 45	29110545AS	D	1	10	10
Backset mm 50	29110550AS	D	1	10	10
Backset mm 60	29110560AS	D	1	10	10
Backset mm 70	29110570AS	D	1	10	10



FOREND, POLISHED AND PAINTED BRASS, MM 22 SQUARE EDGE

Backset mm 40	29110540LS	D	1	10	10
Backset mm 45	29110545LS	D	1	10	10
Backset mm 50	29110550LS	D	1	10	10
Backset mm 60	29110560LS	D	1	10	10
Backset mm 70	29110570LS	D	1	10	10



FOREND, CHROME-PLATED AND POLISHED BRASS MM 22 SQUARE EDGE

Backset mm 40	29110540KS	D	1	10	10
Backset mm 45	29110545KS	D	1	10	10
Backset mm 50	29110550KS	D	1	10	10
Backset mm 60	29110560KS	D	1	10	10
Backset mm 70	29110570KS	D	1	10	10



FOREND, NICKEL-PLATED SATIN BRASS, MM 22 SQUARE EDGE

Backset mm 40	29110540NS	D	1	10	10
Backset mm 45	29110545NS	D	1	10	10
Backset mm 50	29110550NS	D	1	10	10
Backset mm 60	29110560NS	D	1	10	10
Backset mm 70	29110570NS	D	1	10	10



FOREND, BRONZED-PLATED AND BRUSHED BRASS, MM 22 SQUARE EDGE

Backset mm 40	29110540BS	D	1	10	10
Backset mm 45	29110545BS	D	1	10	10
Backset mm 50	29110550BS	D	1	10	10
Backset mm 60	29110560BS	D	1	10	10
Backset mm 70	29110570BS	D	1	10	10



Code
Status
Single
package
Multiple
package
Min. ord.

Infilare 291



FOREND, STAINLESS STEEL MM 22 SQUARE EDGE

Backset mm 40	291105402S	D	1	10	10
Backset mm 45	291105452S	D	1	10	10
Backset mm 50	291105502S	D	1	10	10
Backset mm 60	291105602S	D	1	10	10
Backset mm 70	291105702S	D	1	10	10

PACKED IN NYLON BAGS with 25 pieces each.

FOREND, STAINLESS STEEL MM 22 SQUARE EDGE

Backset mm 40	291105402Q	D	1	25	25
Backset mm 45	291105452Q	D	1	25	25
Backset mm 50	291105502Q	D	1	25	25
Backset mm 60	291105602Q	D	1	25	25
Backset mm 70	291105702Q	C	1	25	25



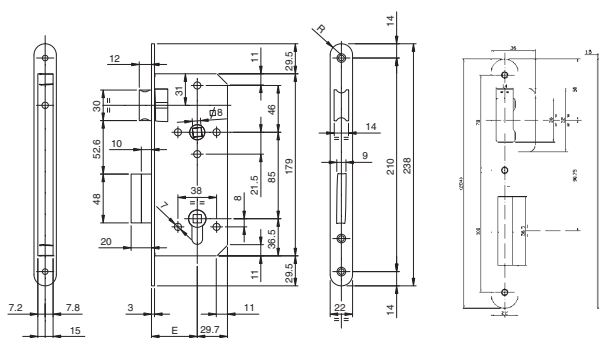
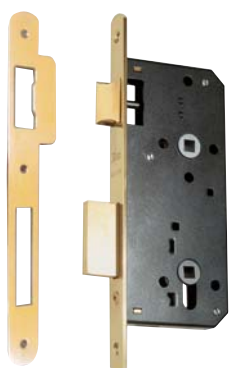
FOREND, STAINLESS STEEL MM 24 SQUARE EDGE

Backset mm 40	291145402S	D	1	10	10
Backset mm 45	291145452S	D	1	10	10
Backset mm 50	291145502S	D	1	10	10
Backset mm 60	291145602S	D	1	10	10
Backset mm 70	291145702S	D	1	10	10

PACKED IN NYLON BAGS with 25 pieces each.

FOREND, STAINLESS STEEL MM 24 SQUARE EDGE

Backset mm 40	291145402Q	D	1	25	25
Backset mm 45	291145452Q	D	1	25	25
Backset mm 50	291145502Q	D	1	25	25
Backset mm 60	291145602Q	D	1	25	25
Backset mm 70	291145702Q	D	1	25	25



CLOSED-CASE mortice lock operating with European profile cylinder. Two mm 10 throws.

Double handle follower mm 8 for locked/unlocked function.

Center distance mm 85. 6 fixing holes for escutcheons and security plates. Striking plate. Fixing screws.



FOREND, BRASS. GOLD PLATED 24 KT MM 22 ROUND EDGE

Backset mm 40	29111540AS	D	1	10	10
Backset mm 45	29111545AS	D	1	10	10
Backset mm 50	29111550AS	D	1	10	10
Backset mm 60	29111560AS	D	1	10	10
Backset mm 70	29111570AS	D	1	10	10



Code
Status
Single
package
Multiple
package
Min. ord.

Infilare 291



FOREND, POLISHED AND PAINTED BRASS, MM 22 ROUND EDGE

Backset mm 40	29111540LS	D	1	10	10
Backset mm 45	29111545LS	D	1	10	10
Backset mm 50	29111550LS	D	1	10	10
Backset mm 60	29111560LS	D	1	10	10
Backset mm 70	29111570LS	D	1	10	10



FOREND, CHROME-PLATED AND POLISHED BRASS MM 22 ROUND EDGE

Backset mm 40	29111540KS	D	1	10	10
Backset mm 45	29111545KS	D	1	10	10
Backset mm 50	29111550KS	D	1	10	10
Backset mm 60	29111560KS	D	1	10	10
Backset mm 70	29111570KS	D	1	10	10



FOREND, NICKEL-PLATED SATIN BRASS, MM 22 ROUND EDGE

Backset mm 40	29111540NS	D	1	10	10
Backset mm 45	29111545NS	D	1	10	10
Backset mm 50	29111550NS	D	1	10	10
Backset mm 60	29111560NS	D	1	10	10
Backset mm 70	29111570NS	D	1	10	10



FOREND, POLISHED AND PAINTED BRASS, MM 22 ROUND EDGE

Backset mm 40	29111540BS	D	1	10	10
Backset mm 45	29111545BS	D	1	10	10
Backset mm 50	29111550BS	D	1	10	10
Backset mm 60	29111560BS	D	1	10	10
Backset mm 70	29111570BS	D	1	10	10



FOREND, STAINLESS STEEL MM 22 ROUND EDGE

Backset mm 40	291115402S	D	1	10	10
Backset mm 45	291115452S	D	1	10	10
Backset mm 50	291115502S	D	1	10	10
Backset mm 60	291115602S	D	1	10	10
Backset mm 70	291115702S	D	1	10	10

PACKED IN NYLON BAGS with 25 pieces each.

FOREND, STAINLESS STEEL MM 22 ROUND EDGE

Backset mm 40	291115402Q	D	1	25	25
Backset mm 45	291115452Q	D	1	25	25
Backset mm 50	291115502Q	D	1	25	25
Backset mm 60	291115602Q	D	1	25	25
Backset mm 70	291115702Q	D	1	25	25



FOREND, STAINLESS STEEL MM 24 ROUND EDGE

Backset mm 40	291155402S	D	1	10	10
Backset mm 45	291155452S	D	1	10	10
Backset mm 50	291155502S	D	1	10	10
Backset mm 60	291155602S	D	1	10	10
Backset mm 70	291155702S	D	1	10	10

PACKED IN NYLON BAGS with 25 pieces each.

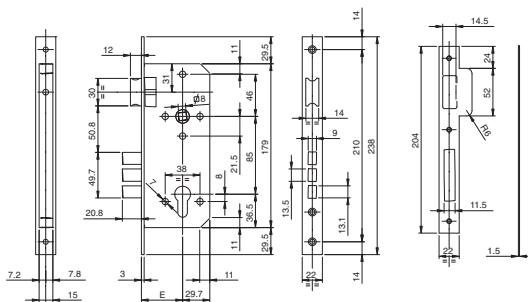
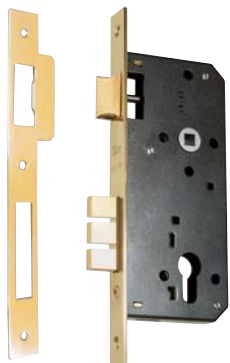
FOREND, STAINLESS STEEL MM 24 ROUND EDGE

Backset mm 40	291155402Q	D	1	25	25
Backset mm 45	291155452Q	D	1	25	25
Backset mm 50	291155502Q	D	1	25	25
Backset mm 60	291155602Q	D	1	25	25
Backset mm 70	291155702Q	D	1	25	25



Code
Status
Single package
Multiple package
Min. ord.

Infilare 291



CLOSED-CASE mortise lock operating with European profile cylinder.
ANTI-SAW AND ANTI-DRILL DEADBOLT. Two mm 10,4 throws. Reversible latchbolt.
 Handle follower mm 8 for locked/unlocked function. Center distance mm 85.
 6 fixing holes for escutcheons and security plates. Striking plate. Fixing screws.

FOREND, POLISHED AND PAINTED BRASS, MM 22 SQUARE EDGE



Backset mm 45	29112545A	D	1	10	10
Backset mm 50	29112550A	D	1	10	10
Backset mm 60	29112560A	D	1	10	10
Backset mm 70	29112570A	D	1	10	10

FOREND, POLISHED AND PAINTED BRASS, MM 22 SQUARE EDGE



Backset mm 45	29112545L	D	1	10	10
Backset mm 50	29112550L	D	1	10	10
Backset mm 60	29112560L	D	1	10	10
Backset mm 70	29112570L	D	1	10	10

FOREND, CHROME-PLATED AND POLISHED BRASS MM 22 SQUARE EDGE



Backset mm 45	29112545K	D	1	10	10
Backset mm 50	29112550K	D	1	10	10
Backset mm 60	29112560K	D	1	10	10
Backset mm 70	29112570K	D	1	10	10

FOREND, NICKEL-PLATED SATIN BRASS, MM 22 SQUARE EDGE



Backset mm 45	29112545N	D	1	10	10
Backset mm 50	29112550N	D	1	10	10
Backset mm 60	29112560N	D	1	10	10
Backset mm 70	29112570N	D	1	10	10

FOREND, BRONZED-PLATED AND BRUSHED BRASS, MM 22 SQUARE EDGE



Backset mm 45	29112545B	D	1	10	10
Backset mm 50	29112550B	D	1	10	10
Backset mm 60	29112560B	D	1	10	10
Backset mm 70	29112570B	D	1	10	10

FOREND, STAINLESS STEEL MM 22 SQUARE EDGE

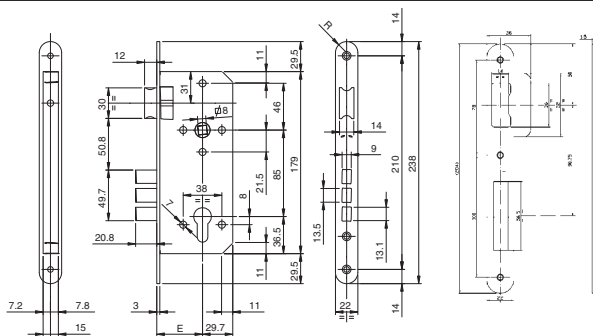
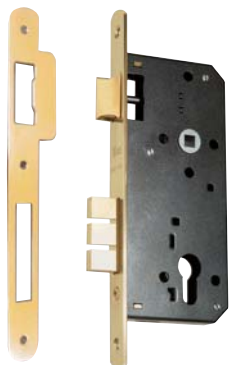


Backset mm 45	291125452	D	1	10	10
Backset mm 50	291125502	D	1	10	10
Backset mm 60	291125602	C	1	10	10
Backset mm 70	291125702	D	1	10	10



Code
Status
Single package
Multiple package
Min. ord.

Infilare 291



CLOSED-CASE mortice lock operating with European profile cylinder. **ANTI-SAW AND ANTI-DRILL DEADBOLT.**

Two mm 10,4 throws. Reversible latchbolt. Handle follower mm 8 for locked/unlocked function.

Center distance mm 85. 6 fixing holes for escutcheons and security plates. Striking plate. Fixing screws.

FOREND, BRASS GOLD PLATED 24 KT MM 22 ROUND EDGE



Backset mm 45	29113545A	D	1	10	10
Backset mm 50	29113550A	D	1	10	10
Backset mm 60	29113560A	D	1	10	10
Backset mm 70	29113570A	D	1	10	10

FOREND, POLISHED AND PAINTED BRASS, MM 22 ROUND EDGE



Backset mm 45	29113545L	D	1	10	10
Backset mm 50	29113550L	D	1	10	10
Backset mm 60	29113560L	D	1	10	10
Backset mm 70	29113570L	D	1	10	10

FOREND, CHROME-PLATED POLISHED BRASS, MM 22 ROUND EDGE



Backset mm 45	29113545K	D	1	10	10
Backset mm 50	29113550K	D	1	10	10
Backset mm 60	29113560K	D	1	10	10
Backset mm 70	29113570K	D	1	10	10

FOREND, NICKEL-PLATED SATIN BRASS, MM 22 ROUND EDGE



Backset mm 45	29113545N	D	1	10	10
Backset mm 50	29113550N	D	1	10	10
Backset mm 60	29113560N	D	1	10	10
Backset mm 70	29113570N	D	1	10	10

FOREND, BRONZE-PLATED AND BRUSHED BRASS, MM 22 ROUND EDGE



Backset mm 45	29113545B	D	1	10	10
Backset mm 50	29113550B	D	1	10	10
Backset mm 60	29113560B	D	1	10	10
Backset mm 70	29113570B	D	1	10	10

FOREND, STAINLESS STEEL, MM 22 ROUND EDGE



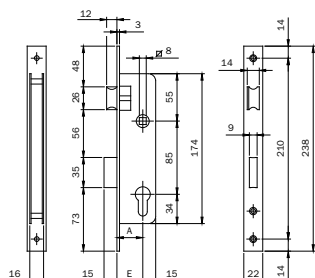
Backset mm 45	291135452	D	1	10	10
Backset mm 50	291135502	D	1	10	10
Backset mm 60	291135602	D	1	10	10
Backset mm 70	291135702	D	1	10	10

Code
Status
Single package
Multiple package
Min. ord.

Infilare 200



Cylinder and striking plate to be ordered separately



Open-case mortice lock operating with European profile cylinder.

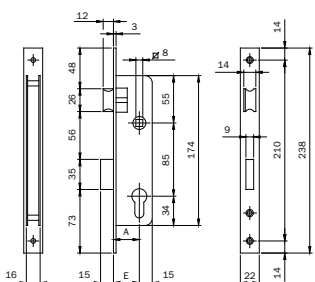
BRASS-PLATED STEEL FOREND with **SQUARE EDGE**. MM 15 throw.

Reversible latchbolt. Handle follower mm 8. 2 escutcheons. Fixing screws.

Backset mm 25	200251	C	1	10	10
Backset mm 30	200301	C	1	10	10
Backset mm 35	200351	C	1	10	10



Striking plate to be ordered separately



Open-case mortice lock operating with European profile cylinder.

BRASS-PLATED STEEL FOREND with **SQUARE EDGE**. MM 15 throw.

Reversible latchbolt. Handle follower mm 8.

Supplied with cylinder 61 mm art 820828337. 2 escutcheons. Fixing screws.

Backset mm 25	200251C861H	C	1	25	25
Backset mm 30	200301C861H	C	1	25	25
Backset mm 35	200351C861H	C	1	25	25

Open-case mortice lock operating with European profile cylinder.

GOLD PAINTED FOREND with **SQUARE EDGE**. MM 15 throw.

Reversible latchbolt. Handle follower mm 8.

Supplied with cylinder 61 mm art 820828337. 2 escutcheons. Fixing screws.

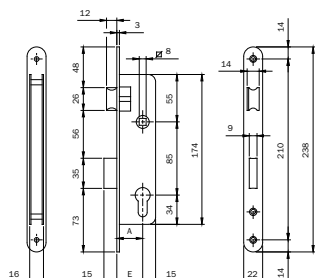
Backset mm 25	200256C861H	D	1	25	25
Backset mm 30	200306C861H	D	1	25	25
Backset mm 35	200356C861H	C	1	25	25

Code
Status
Single
package
Multiple
package
Min. ord.

Infilare 200



Cylinder and striking plate
to be ordered separately



Open-case mortice lock operating with European profile cylinder.

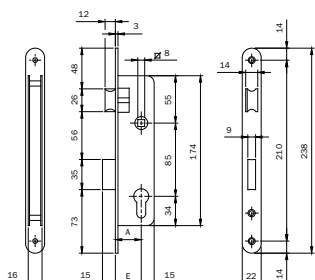
BRASS-PLATED STEEL FOREND with **ROUND EDGE**.

MM 15 throw. Handle follower mm 8. 2 escutcheons. Fixing screws.

Backset mm 25	210251	D	1	10	10
Backset mm 30	210301	D	1	10	10
Backset mm 35	210351	C	1	10	10



Striking plate to be
ordered separately



Open-case mortice lock operating with European profile cylinder. **BRASS-PLATED FOREND**

with **ROUND EDGE**. MM 15 throw. Reversible latchbolt. Handle follower mm 8.

Supplied with cylinder 61 mm art 820828337. 2 escutcheons. Fixing screws.

Backset mm 25	210251C861H	D	1	25	25
Backset mm 30	210301C861H	D	1	25	25
Backset mm 35	210351C861H	D	1	25	25

Open-case mortice lock operating with European profile cylinder.

GOLD PAINTED FOREND with **ROUND EDGE**. MM 15 throw.

Reversible latchbolt. Handle follower mm 8.

Supplied with cylinder 61 mm art 820828337. 2 escutcheons. Fixing screws.

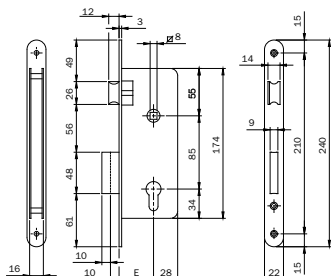
Backset mm 25	210256C861H	D	1	25	25
Backset mm 30	210306C861H	D	1	25	25
Backset mm 35	210356C861H	D	1	25	25

Code
Status
Single
package
Multiple
package
Min. ord.

Infilare 200



Striking plate to be ordered separately



Open-case mortice lock operating with European profile cylinder. **BRASS-PLATED STEEL FOREND** with **ROUND EDGE**. Two mm 10 throws. Reversible latchbolt. Handle follower mm 8. Supplied with cylinder 61 mm art. 820828337. 2 escutcheons. Fixing screws.

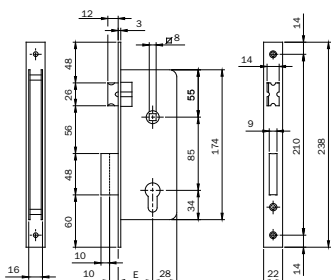
Backset mm 40	210401C861H	D	1	25	25
Backset mm 45	210451C861H	D	1	25	25
Backset mm 50	210501C861H	C	1	25	25
Backset mm 60	210601C861H	D	1	25	25
Backset mm 70	210701C861H	D	1	25	25

Open-case mortice lock operating with European profile cylinder. **GOLD PAINTED FOREND** with **ROUND EDGE**. Two mm 10 throws. Reversible latchbolt. Handle follower mm 8. Supplied with cylinder 61 mm art. 820828337. 2 escutcheons. Fixing screws.

Backset mm 40	210406C861H	D	1	25	25
Backset mm 45	210456C861H	D	1	25	25
Backset mm 50	210506C861H	D	1	25	25
Backset mm 60	210606C861H	D	1	25	25
Backset mm 70	210706C861H	D	1	25	25



Cylinder and striking plate to be ordered separately



Open-case mortice lock operating with European profile cylinder. **BRASS-PLATED STEEL FOREND** with **SQUARE EDGE**. Two mm 10 throws. Reversible convex latchbolt. Handle follower mm 8. 2 escutcheons. Fixing screws.

Backset mm 40	205401	D	1	10	10
Backset mm 45	205451	C	1	10	10
Backset mm 50	205501	C	1	10	10
Backset mm 60	205601	C	1	10	10

Open-case mortice lock operating with European profile cylinder. **GOLD PAINTED FOREND** with **SQUARE EDGE**. Two mm 10 throws. Reversible convex latchbolt. **PACKED IN NYLON BAGS** with 25 pieces each. 2 escutcheons. Fixing screws.

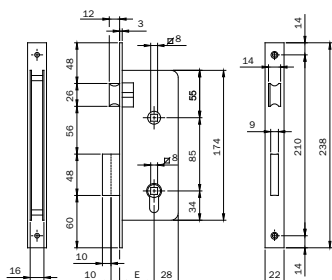
Backset mm 40	205406N	D	1	25	25
Backset mm 45	205456N	D	1	25	25
Backset mm 50	205506N	C	1	25	25
Backset mm 60	205606N	C	1	25	25
Backset mm 70	205706N	C	1	25	25

Code
Status
Single
package
Multiple
package
Min. ord.

Infilare 200



Cylinder and striking plate
to be ordered separately



Open-case mortice lock. **DOUBLE HANDLE FOLLOWER MM 8.**
Locked/unlocked function. **BRASS-PLATED FOREND** with **SQUARE EDGE.**
Twomm 10 throws. Reversible latchbolt. 2 escutcheons. Fixing screws.

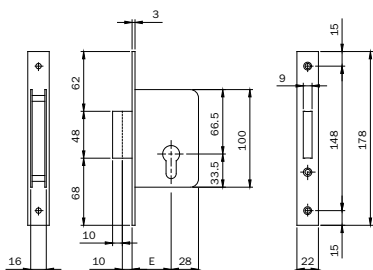
Backset mm 40	221401	D	1	10	10
Backset mm 45	221451	D	1	10	10
Backset mm 50	221501	D	1	10	10
Backset mm 60	221601	D	1	10	10
Backset mm 70	221701	D	1	10	10

Open-case mortice lock. **DOUBLE HANDLE FOLLOWER MM 8.**
Locked/unlocked function. **GOLD PAINTED FOREND** with **SQUARE EDGE.**
Twomm 10 throws. Reversible latchbolt. 2 escutcheons. Fixing screws.

Backset mm 40	221406	B	1	10	10
Backset mm 45	221456	D	1	10	10
Backset mm 50	221506	D	1	10	10
Backset mm 60	221606	D	1	10	10
Backset mm 70	221706	D	1	10	10



Cylinder and striking plate
to be ordered separately



Open-case mortice lock operating with European profile cylinder. **BRASS-PLATED STEEL FOREND**
with **SQUARE EDGE.** Two mm 10 throws. Version with deadbolt only. 2 escutcheons. Fixing screws.

Backset mm 35	201351	D	1	10	10
Backset mm 40	201401	D	1	10	10
Backset mm 45	201451	D	1	10	10
Backset mm 50	201501	C	1	10	10
Backset mm 60	201601	C	1	10	10

Open-case mortice lock operating with European profile cylinder. **GOLD PAINTED FOREND**
with **SQUARE EDGE.** Two mm 10 throws. Version with deadbolt only. 2 escutcheons. Fixing screws.

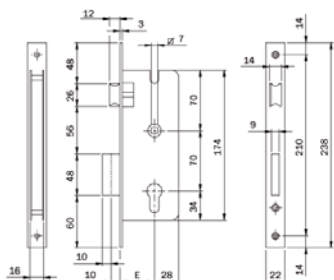
Backset mm 35	201356	D	1	10	10
Backset mm 40	201406	D	1	10	10
Backset mm 45	201456	D	1	10	10
Backset mm 50	201506	D	1	10	10
Backset mm 60	201606	D	1	10	10

Code
Status
Single
package
Multiple
package
Min. ord.

Infilare 200



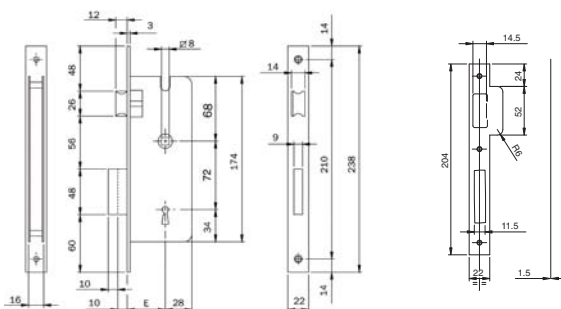
Cylinder and striking plate
to be ordered separately



Open-case mortice lock operating with European profile cylinder. **BRASS-PLATED STEEL FOREND** with **SQUARE EDGE**. Two mm 10 throws. Reversible latchbolt. **HANDLE FOLLOWER MM 7**.

Center distance between handle follower and key mm 70. 2 escutcheons. Fixing screws.

Backset mm 40	240401	D	1	10	10
Backset mm 45	240451	D	1	10	10
Backset mm 50	240501	C	1	10	10



Open-case mortice lock operating with bit key. **GOLD PAINTED FOREND** with **SQUARE EDGE**.

Two mm 10 throws. Reversible latchbolt. Handle follower mm 8.

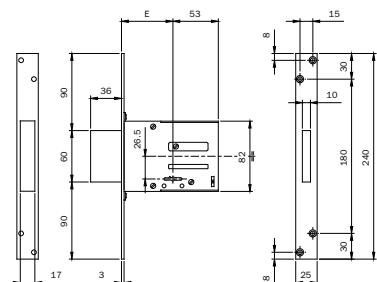
Center distance between handle follower and key mm 72. 2 keys.

Striking plate 032011. Fixing screws.

Backset mm 40	250406	A	1	10	10
Backset mm 45	250456	D	1	10	10

Code
Status
Single
package
Multiple
package
Min. ord.

Infilare



CLOSED-CASE mortice lock operating with double bit key. **BRASS-PLATED FOREND** with **SQUARE EDGE**. Four throws, square deadbolt. 3 keys. Striking plate 990818.

Backset mm 52

261521 D 1 10 10

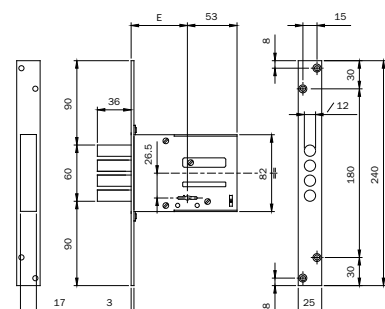
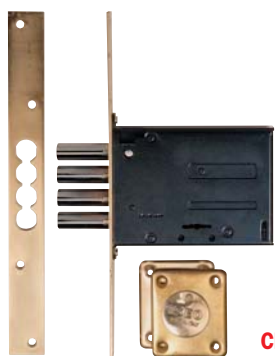
Backset mm 60

261601 D 1 10 10

Backset mm 70

261701 D 1 10 10

Key blank
990002



CLOSED-CASE rim lock, painted black, operating with double bit key. **BRASS-PLATED STEEL FOREND** with **ROUND EDGE**. Four throws, deadbolt with 4 loading springs.

5 keys. Striking plate 032041.

Backset mm 60

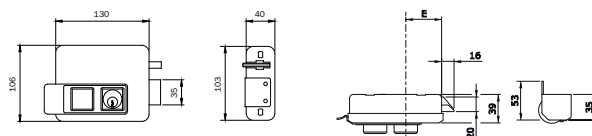
261601.4 C 1 10 10

Key blank
990002



Code
Status
Single package
Multiple package
Min. ord.

2001



Key blank
020259

Electric rim lock for wooden frames, painted, **RIGHT-HAND. 12V-15W A.C.** Internal cylinder and external loose cylinder. Self-locking latchbolt. Detached self-loading spring with adjustable force.

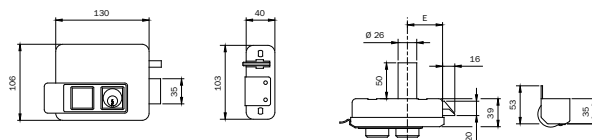
3 KEYS. Adjustable keep with blade. Instructions sheets. Fixing screws.

Backset mm 50	521010505	D	1	6	6
Backset mm 60	521010605	D	1	6	6
Backset mm 70	521010705	D	1	6	6
Backset mm 80	521010805	D	1	6	6

Electric rim lock for wooden frames, painted, **LEFT-HAND. 12V-15W A.C.** Internal cylinder and external loose cylinder. Self-locking latchbolt. Detached self-loading spring with adjustable force.

3 KEYS. Adjustable keep with blade. Instructions sheets. Fixing screws.

Backset mm 50	521020505	D	1	6	6
Backset mm 60	521020605	D	1	6	6
Backset mm 70	521020705	D	1	6	6
Backset mm 80	521020805	D	1	6	6



Key blank
020259

Electric rim lock for wooden frames, painted, **RIGHT-HAND. 12V-15W A.C.** Internal cylinder and fixed external cylinder D mm 26x50. Self-locking latchbolt. Detached self-loading spring with adjustable force.

3 KEYS. Adjustable keep with blade. Escutcheon. Instructions sheet. Fixing screws.

Backset mm 50	521011505	D	1	6	6
Backset mm 60	521011605	D	1	6	6
Backset mm 70	521011705	D	1	6	6
Backset mm 80	521011805	D	1	6	6

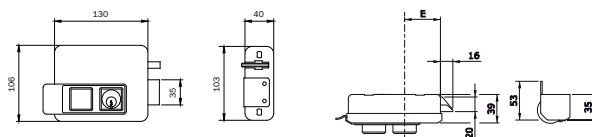
Electric rim lock for wooden frames, painted, **LEFT-HAND. 12V-15W A.C.** Internal cylinder and fixed external cylinder D mm 26x50. Self-locking latchbolt. Detached self-loading spring with adjustable force.

3 KEYS. Adjustable keep with blade. Escutcheon. Instructions sheet. Fixing screws.

Backset mm 50	521021505	D	1	6	6
Backset mm 60	521021605	D	1	6	6
Backset mm 70	521021705	D	1	6	6
Backset mm 80	521021805	D	1	6	6

Code
Status
Single package
Multiple package
Min. ord.

2001



Key blank
020259

Electric rim lock for wooden frames, painted, **RIGHT-HAND. 12V-15W A.C.** Internal pushbutton and detached external cylinder. Self-locking latchbolt. Detached self-loading spring with adjustable force.

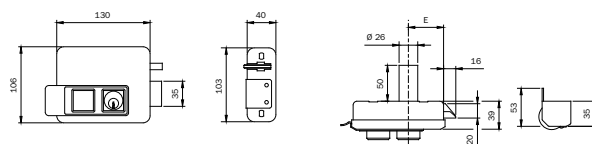
3 KEYS. Adjustable keep with blade. Instructions sheet. Fixing screws.

Backset mm 50	521110505	D	1	6	6
Backset mm 60	521110605	D	1	6	6
Backset mm 70	521110705	D	1	6	6
Backset mm 80	521110805	D	1	6	6

Electric rim lock for wooden frames, painted, **LEFT-HAND. 12V-15W A.C.** Internal pushbutton and detached external cylinder. Self-locking latchbolt. Detached self-loading spring with adjustable force. **3 KEYS.**

Adjustable keep with blade. Instructions sheet. Fixing screws.

Backset mm 50	521120505	D	1	6	6
Backset mm 60	521120605	D	1	6	6
Backset mm 70	521120705	D	1	6	6
Backset mm 80	521120805	D	1	6	6



Key blank
020259

Electric rim lock for wooden frames, painted, **RIGHT-HAND. 12V-15W A.C.** Internal pushbutton and external fixed cylinder D mm 26x50. Self-locking latchbolt. Detached self-loading spring with adjustable force. **3 KEYS.**

Adjustable keep with blade. Escutcheon. Instructions sheet. Fixing screws.

Backset mm 50	521111505	D	1	6	6
Backset mm 60	521111605	D	1	6	6
Backset mm 70	521111705	D	1	6	6
Backset mm 80	521111805	D	1	6	6

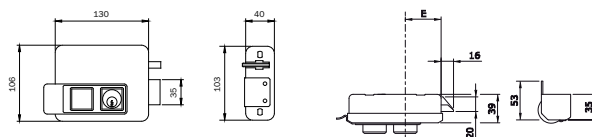
Electric rim lock for wooden frames, painted, **LEFT-HAND. 12V-15W A.C.** Internal pushbutton and external fixed cylinder D mm 26x50. Self-locking latchbolt. Detached self-loading spring with adjustable force. **3 KEYS.**

Adjustable keep with blade. Escutcheon. Instructions sheet. Fixing screws.

Backset mm 50	521121505	D	1	6	6
Backset mm 60	521121605	D	1	6	6
Backset mm 70	521121705	D	1	6	6
Backset mm 80	521121805	D	1	6	6

Code
Status
Single package
Multiple package
Min. ord.

2001



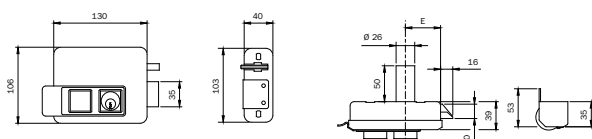
Key blank
020259

Electric rim lock for wooden frames, painted, **RIGHT-HAND. 12V-15W A.C.** Internal pushbutton, internal cylinder for **"PUSHBUTTON LOCKING"** or **"HOLD-OPEN"** functions, and external detached cylinder. Self-locking latchbolt. Detached self-loading spring with adjustable force. **3 KEYS.** Adjustable keep with blade. Instructions sheet. Fixing screws.

Backset mm 50	521310505	B	1	6	6
Backset mm 60	521310605	A	1	6	6
Backset mm 70	521310705	D	1	6	6
Backset mm 80	521310805	D	1	6	6

Electric rim lock for wooden frames, painted, **LEFT-HAND. 12V-15W A.C.** Internal pushbutton, internal cylinder for **"PUSHBUTTON LOCKING"** or **"HOLD-OPEN"** functions, and external detached cylinder. Self-locking latchbolt. Detached self-loading spring with adjustable force. **3 KEYS.** Adjustable keep with blade. Instructions sheet. Fixing screws.

Backset mm 50	521320505	B	1	6	6
Backset mm 60	521320605	B	1	6	6
Backset mm 70	521320705	D	1	6	6
Backset mm 80	521320805	D	1	6	6



Key blank
020259

Electric rim lock for wooden frames, painted, **RIGHT-HAND. 12V-15W A.C.** Internal pushbutton, internal cylinder for **"PUSHBUTTON LOCKING"** or **"HOLD-OPEN"** functions, and external fixed cylinder D mm 26x50. Self-locking latchbolt. Detached self-loading spring with adjustable force. **3 KEYS.** Adjustable keep with blade. Escutcheon. Instructions sheet. Fixing screws.

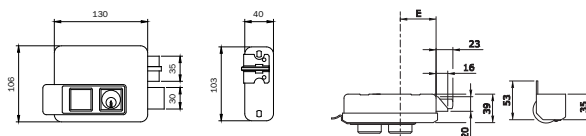
Backset mm 50	521311505	D	1	6	6
Backset mm 60	521311605	D	1	6	6
Backset mm 70	521311705	D	1	6	6
Backset mm 80	521311805	D	1	6	6

Electric rim lock for wooden frames, painted, **LEFT-HAND. 12V-15W A.C.** Internal pushbutton, internal cylinder for **"PUSHBUTTON LOCKING"** or **"HOLD-OPEN"** functions, and external fixed cylinder D mm 26x50. Self-locking latchbolt. Detached self-loading spring with adjustable force. **3 KEYS.** Adjustable keep with blade. Escutcheon. Instructions sheet. Fixing screws.

Backset mm 50	521321505	D	1	6	6
Backset mm 60	521321605	D	1	6	6
Backset mm 70	521321705	D	1	6	6
Backset mm 80	521321805	D	1	6	6

Code
Status
Single package
Multiple package
Min. ord.

2001



Key blank
020259

Electric rim lock for wooden frames, painted, **RIGHT-HAND. 12V-15W A.C.** Internal cylinder and external detached cylinder. Two throws. Self-locking latchbolt with built-in loading spring with adjustable force.

3 KEYS. Adjustable keep with blade. Instructions sheet. Fixing screws.

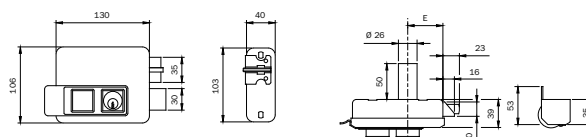
Backset mm 50	531010505	D	1	6	6
Backset mm 60	531010605	D	1	6	6
Backset mm 70	531010705	D	1	6	6
Backset mm 80	531010805	D	1	6	6

Electric rim lock for wooden frames, painted, **LEFT-HAND. 12V-15W A.C.** Internal cylinder and external detached cylinder. Two throws.

Self-locking latchbolt with built-in loading spring with adjustable force. **3 KEYS.**

Adjustable keep with blade. Instructions sheet. Fixing screws.

Backset mm 50	531020505	D	1	6	6
Backset mm 60	531020605	D	1	6	6
Backset mm 70	531020705	D	1	6	6
Backset mm 80	531020805	D	1	6	6



Key blank
020259

Electric rim lock for wooden frames, painted, **RIGHT-HAND. 12V-15W A.C.** Internal cylinder and fixed external cylinder D mm 26x50. Two throws. Self-locking latchbolt with built-in loading spring with adjustable force. **3 KEYS.** Adjustable keep with blade.

Escutcheon. Instructions sheet. Fixing screws.

Backset mm 50	531011505	D	1	6	6
Backset mm 60	531011605	D	1	6	6
Backset mm 70	531011705	D	1	6	6
Backset mm 80	531011805	D	1	6	6

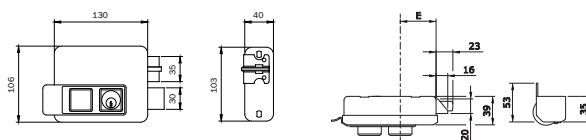
Electric rim lock for wooden frames, painted, **LEFT-HAND. 12V-15W A.C.** Internal cylinder and fixed external cylinder D mm 26x50. Two throws. Self-locking latchbolt with built-in loading spring with adjustable force. **3 KEYS.** Adjustable keep with blade.

Escutcheon. Instructions sheet. Fixing screws.

Backset mm 50	531021505	D	1	6	6
Backset mm 60	531021605	D	1	6	6
Backset mm 70	531021705	D	1	6	6
Backset mm 80	531021805	D	1	6	6

Code
Status
Single package
Multiple package
Min. ord.

2001



Key blank
020259

Electric rim lock for wooden frames, painted, **RIGHT-HAND. 12V-15W A.C.** Internal pushbutton. Two throws operated by internal cylinder and external detached cylinder. Self-locking latchbolt with adjustable force. **3 KEYS.** Adjustable keep with blade.

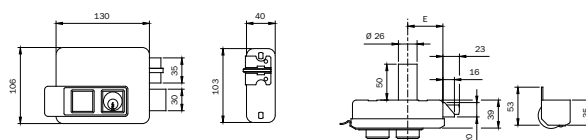
Instructions sheet. Fixing screws.

Backset mm 50	531210505	C	1	6	6
Backset mm 60	531210605	B	1	6	6
Backset mm 70	531210705	B	1	6	6
Backset mm 80	531210805	D	1	6	6

Electric rim lock for wooden frames, painted, **LEFT-HAND. 12V-15W A.C.** Internal pushbutton. Two throws operated by internal cylinder and external detached cylinder. Self-locking latchbolt with adjustable force. **3 KEYS.** Adjustable keep with blade.

Instructions sheet. Fixing screws.

Backset mm 50	531220505	D	1	6	6
Backset mm 60	531220605	B	1	6	6
Backset mm 70	531220705	D	1	6	6
Backset mm 80	531220805	D	1	6	6



Key blank
020259

Electric rim lock for wooden frames, painted, **RIGHT-HAND. 12V-15W A.C.** Internal pushbutton. Two throws operated by internal cylinder and external fixed cylinder D mm 26x50.

Self-locking latchbolt with built-in loading spring with adjustable force. **3 KEYS.** Adjustable keep with blade.

Escutcheon. Instructions sheet. Fixing screws.

Backset mm 50	531211505	D	1	6	6
Backset mm 60	531211605	B	1	6	6
Backset mm 70	531211705	D	1	6	6
Backset mm 80	531211805	D	1	6	6

Electric rim lock for wooden frames, painted, **LEFT-HAND. 12V-15W A.C.** Internal pushbutton. Two throws operated by internal cylinder and external fixed cylinder D mm 26x50.

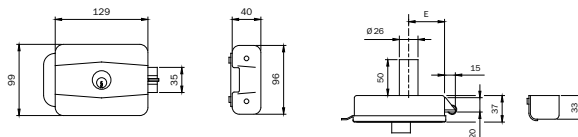
Self-locking latchbolt with built-in loading spring with adjustable force. **3 KEYS.** Adjustable keep with blade.

Escutcheon. Instructions sheet. Fixing screws.

Backset mm 50	531221505	D	1	6	6
Backset mm 60	531221605	B	1	6	6
Backset mm 70	531221705	D	1	6	6
Backset mm 80	531221805	D	1	6	6

Code
Status
Single package
Multiple package
Min. ord.

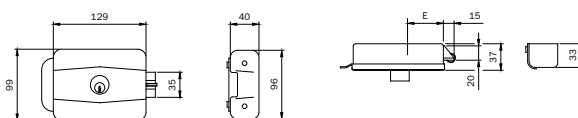
Elettrica 500



Electric rim lock for wooden frames, painted, **LEFT- OR RIGHT-HAND. 12V-15W A.C.** Internal cylinder and external fixed cylinder D mm 26x50. Self-locking latchbolt with built-in loading spring.

3 KEYS. Adjustable keep. Escutcheon. Instructions sheet.

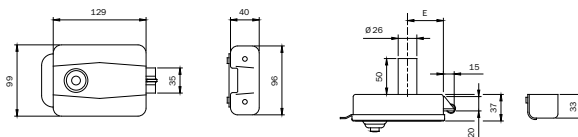
Backset mm 50	500500	C	1	10	10
Backset mm 60	500600	B	1	10	10
Backset mm 70	500700	C	1	10	10
Backset mm 80	500800	D	1	10	10



Electric rim lock, painted, **LEFT- OR RIGHT-HAND. 12V-15W A.C.** Internal cylinder and external detached cylinder. Self-locking latchbolt with built-in loading spring.

3 KEYS. adjustable keep. Instructions sheet.

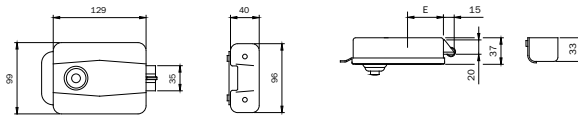
Backset mm 50	501500	D	1	10	10
Backset mm 60	501600	D	1	10	10
Backset mm 70	501700	D	1	10	10
Backset mm 80	501800	D	1	10	10



Electric rim lock, painted, **LEFT- OR RIGHT-HAND. 12V-15W A.C.** Internal pushbutton and external fixed cylinder D 26x50. Self-locking latchbolt with built-in loading spring.

3 KEYS. adjustable keep. Escutcheon. Instructions sheet.

Backset mm 50	510500	D	1	10	10
Backset mm 60	510600	A	1	10	10
Backset mm 70	510700	C	1	10	10
Backset mm 80	510800	C	1	10	10



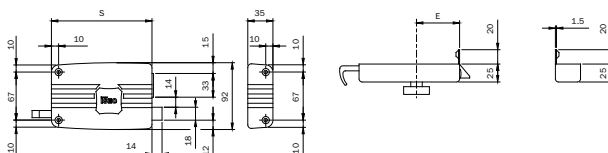
Electric rim lock, painted, **LEFT- OR RIGHT-HAND. 12V-15W A.C.** Internal pushbutton and external detached cylinder D 26x50. Self-locking latchbolt with built-in loading spring.

3 KEYS. adjustable keep. Instructions sheet.

Backset mm 50	511500	D	1	10	10
Backset mm 60	511600	C	1	10	10
Backset mm 70	511700	B	1	10	10
Backset mm 80	511800	D	1	10	10

Code
Status
Single
package
Multiple
package
Min. ord.

Portoncino



Key blank
020259

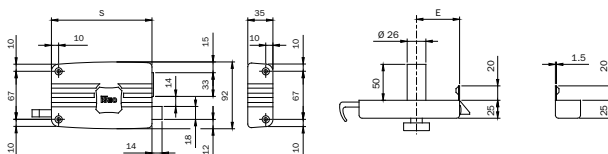
Code	S
40*402	80
40*502	100
40*603	120
40*703	140

Rim lock for wooden frames, **RIGHT-HAND**, with internal knob and external detached cylinder, separate latchbolt with internal rod and external deadlocking by key. **3 KEYS**. Keep. Screws.

2-throw deadbolt. Backset mm 40	401402	B	1	10	10
2-throw deadbolt. Backset mm 50	401502	B	1	10	10
3-throw deadbolt. Backset mm 60	401603	B	1	10	10
3-throw deadbolt. Backset mm 70	401703	C	1	10	10

Rim lock for wooden frames, **LEFT-HAND**, with internal knob and external detached cylinder, separate latchbolt with internal rod and external deadlocking by key. **3 KEYS**. Keep. Screws.

2-throw deadbolt. Backset mm 40	402402	D	1	10	10
2-throw deadbolt. Backset mm 50	402502	C	1	10	10
3-throw deadbolt. Backset mm 60	402603	C	1	10	10
3-throw deadbolt. Backset mm 70	402703	D	1	10	10



Key blank
020259

Code	S
41*402	80
41*502	100
41*603	120
41*703	140

Rim lock for wooden frames, **RIGHT-HAND**, with internal knob and fixed external cylinder D mm 26x50, separate latchbolt with internal rod and external deadlocking by key. **3 KEYS**. Keep. Screws.

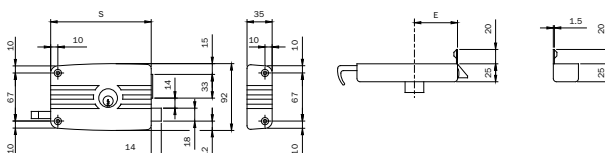
2-throw deadbolt. Backset mm 40	411402	D	2	10	10
2-throw deadbolt. Backset mm 50	411502	C	2	10	10
3-throw deadbolt. Backset mm 60	411603	D	2	10	10
3-throw deadbolt. Backset mm 70	411703	D	2	10	10

Rim lock for wooden frames, **LEFT-HAND**, with internal knob and fixed external cylinder D mm 26x50, separate latchbolt with internal rod and external deadlocking by key. **3 KEYS**. Keep. Screws.

2-throw deadbolt. Backset mm 40	412402	D	2	10	10
2-throw deadbolt. Backset mm 50	412502	C	2	10	10
3-throw deadbolt. Backset mm 60	412603	D	2	10	10
3-throw deadbolt. Backset mm 70	412703	D	2	10	10

Code
Status
Single package
Multiple package
Min. ord.

Portoncino



Rim lock for wooden frames, **RIGHT-HAND**, with internal cylinder and external detached cylinder, separate latchbolt with internal rod and external deadlocking by key. **3 KEYS**. Keep. Screws.

2-throw deadbolt. Backset mm 40	421402	D	1	10	10
2-throw deadbolt. Backset mm 50	421502	C	1	10	10
3-throw deadbolt. Backset mm 60	421603	C	1	10	10
3-throw deadbolt. Backset mm 70	421703	D	1	10	10

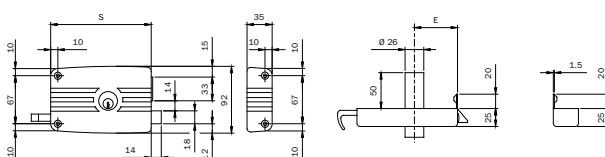


Key blank
020259

Code	S
42*402	80
42*502	100
42*603	120
42*703	140

Rim lock for wooden frames, **LEFT-HAND**, with internal cylinder and external detached cylinder, separate latchbolt with internal rod and external deadlocking by key. **3 KEYS**. Keep. Screws.

2-throw deadbolt. Backset mm 40	422402	D	1	10	10
2-throw deadbolt. Backset mm 50	422502	D	1	10	10
3-throw deadbolt. Backset mm 60	422603	D	1	10	10
3-throw deadbolt. Backset mm 70	422703	D	1	10	10



Rim lock for wooden frames, **RIGHT-HAND**, with internal cylinder and fixed external cylinder D mm 26x50, separate latchbolt with internal rod and external deadlocking by key. **3 KEYS**. Keep. Screws.

2-throw deadbolt. Backset mm 40	431402	B	2	10	10
2-throw deadbolt. Backset mm 50	431502	B	2	10	10
3-throw deadbolt. Backset mm 60	431603	B	2	10	10
3-throw deadbolt. Backset mm 70	431703	B	2	10	10

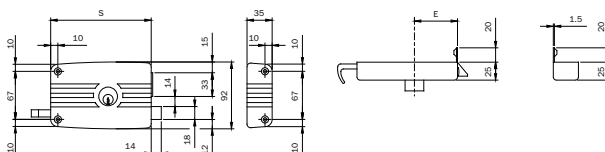


Key blank
020259

Code	S
43*402	80
43*502	100
43*603	120
43*703	140

Rim lock for wooden frames, **LEFT-HAND**, with internal cylinder and fixed external cylinder D mm 26x50, separate latchbolt with internal rod and external deadlocking by key. **3 KEYS**. Keep. Screws.

2-throw deadbolt. Backset mm 40	432402	D	2	10	10
2-throw deadbolt. Backset mm 50	432502	D	2	10	10
3-throw deadbolt. Backset mm 60	432603	C	2	10	10
3-throw deadbolt. Backset mm 70	432703	C	2	10	10



Rim lock for wooden frames, **RIGHT-HAND**, with internal cylinder and external detached cylinder, separate latchbolt with internal rod and external deadlocking by key. **3 KEYS**. Keep. Screws.

PACKAGING: 30-PIECE BOX.

2-throw deadbolt. Backset mm 50	421502E	B	2	30	30
3-throw deadbolt. Backset mm 60	421603E	A	2	30	30
3-throw deadbolt. Backset mm 70	421703E	A	2	30	30



Key blank
020259

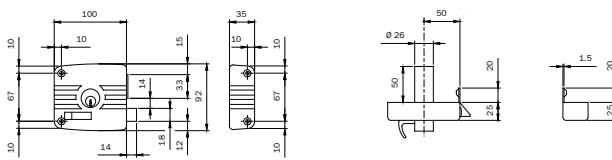
Code	S
42*502E	100
42*603E	120
42*703E	140

Code
Status
Single package
Multiple package
Min. ord.

Portoncino



Key blank
020259

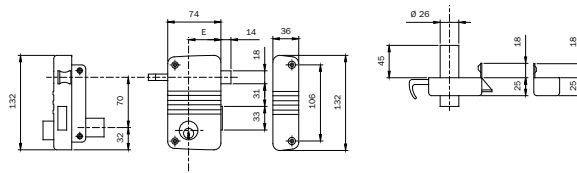


Rim lock for wooden frames, **LEFT-HAND**, "Atene" model with internal cylinder and external fixed cylinder D mm 26x50 separate latchbolt with internal rod located in the case and external deadlocking by key. 2-throw deadbolt. Backset mm 50. **3 KEYS**. Escutcheon.

452502 C 2 10 10



Key blank
020259



VERTICAL, RIGHT-HAND rim lock for wooden frames. Internal cylinder and external fixed cylinder D mm 26x50, separate latchbolt with internal rod and external deadlocking by key. 2-throw deadbolt. Backset mm 45. **3 KEYS**. Escutcheon.

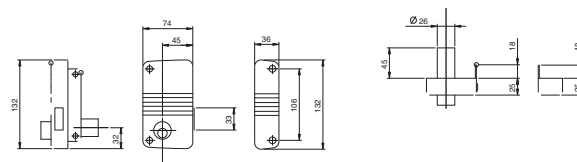
425010450 D 2 10 10

VERTICAL, LEFT-HAND rim lock for wooden frames. Internal cylinder and external fixed cylinder D mm 26x50, separate latchbolt with internal rod and external deadlocking by key. 2-throw deadbolt. Backset mm 45. **3 KEYS**. Escutcheon.

425020450 D 2 10 10



Key blank
020259



VERTICAL, RIGHT-HAND rim lock for wooden frames. Internal cylinder and external fixed cylinder D mm 26x50, 2-throw deadbolt. Backset mm 45. **3 KEYS**. Escutcheon.

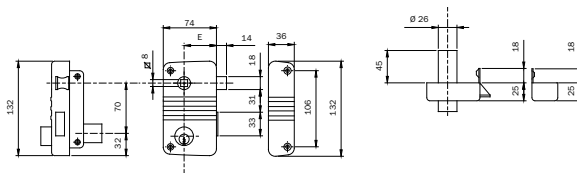
435010450 D 2 10 10

VERTICAL, LEFT-HAND rim lock for wooden frames. Internal cylinder and external fixed cylinder D mm 26x50, 2-throw deadbolt. Backset mm 45. **3 KEYS**. Keep. Escutcheon.

435020450 D 2 10 10



Key blank
020259



VERTICAL, RIGHT-HAND rim lock for wooden frames. Internal cylinder and external fixed cylinder D mm 26x50, Separate latchbolt, handle follower mm 8. Centre distance cylinder follower mm 70. 2-throw deadbolt. Backset mm 45. **3 KEYS**. Escutcheon.

495018450 B 2 10 10

VERTICAL, LEFT-HAND rim lock for wooden frames. Internal cylinder and external fixed cylinder D mm 26x50, Separate latchbolt, handle follower mm 8. Centre distance cylinder follower 70 mm. 2-throw deadbolt. Backset mm 45. **3 KEYS**. Escutcheon.

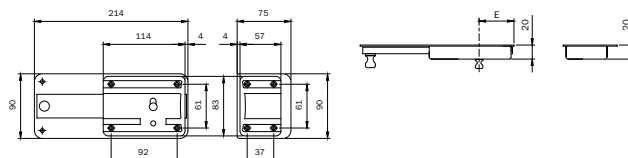
495028450 C 2 10 10

Code
Status
Single
package
Multiple
package
Min. ord.

Ferroglietto



Key blank
020259

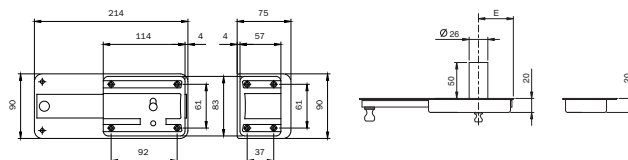


Rim lock for wooden frames, with internal unlatching knob
and **EXTERNAL DETACHED CYLINDER, 3 KEYS. 6-THROW DEADBOLT**. Keep. Screws.

Backset mm 40	300406	D	2	10	10
Backset mm 50	300506	B	2	10	10
Backset mm 60	300606	B	2	10	10



Key blank
020259

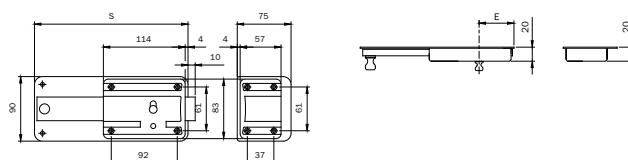


Rim lock for wooden frames, with internal unlatching knob and **EXTERNAL FIXED CYLINDER** D mm 26x50
3 KEYS. 6-THROW DEADBOLT. Keep. Screws.

Backset mm 40	310406	D	2	10	10
Backset mm 50	310506	B	2	10	10
Backset mm 60	310606	B	2	10	10



Key blank
020259



Rim lock for wooden frames, with internal unlatching knob and **EXTERNAL DETACHED CYLINDER,**
3 KEYS. 5-THROW LATCHBOLT + BUILT-IN DEADBOLT. Keep. Screws.

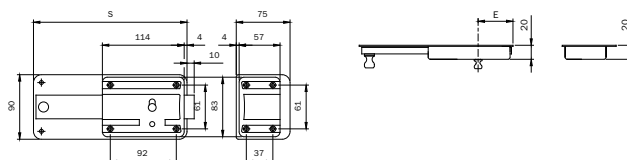
Backset mm 40	320405	D	2	10	10
Backset mm 50	320505	C	2	10	10
Backset mm 60	320605	C	2	10	10

Code
Status
Single package
Multiple package
Min. ord.

Ferroglietto



Key blank
020259

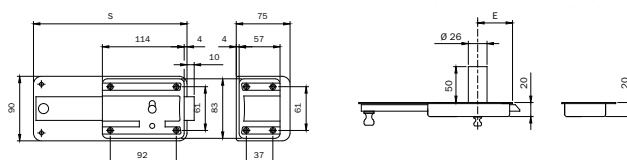


Rim lock for wooden frames, with internal unlatching knob and **EXTERNAL DETACHED CYLINDER, 3 KEYS. 7-THROW LATCHBOLT + BUILT-IN DEADBOLT**. Keep. Screws.

Backset mm 40	320407	C	2	10	10
Backset mm 50	320507	B	2	10	10
Backset mm 60	320607	B	2	10	10



Key blank
020259



Rim lock for wooden frames, with internal unlatching knob and **EXTERNAL FIXED CYLINDER D mm 26x50, 3 KEYS. 5-THROW DEADBOLT+BUILT-IN DEADBOLT**. Keep. Screws.

Keep. Escutcheon. (chiave grezza 020259)

Backset mm 40	330405	D	2	10	10
Backset mm 50	330505	D	2	10	10
Backset mm 60	330605	C	2	10	10

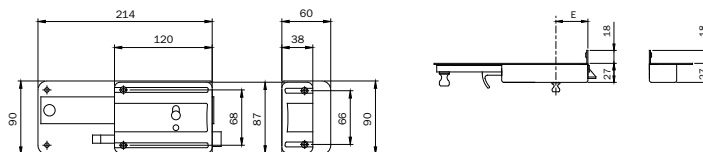
Rim lock for wooden frames, with internal unlatching knob and **EXTERNAL FIXED CYLINDER D mm 26x50**

3 keys. **7-THROW DEADBOLT+BUILT-IN DEADBOLT**. Keep. Screws.

Backset mm 40	330407	D	2	10	10
Backset mm 50	330507	D	2	10	10
Backset mm 60	330607	C	2	10	10



Key blank
020259



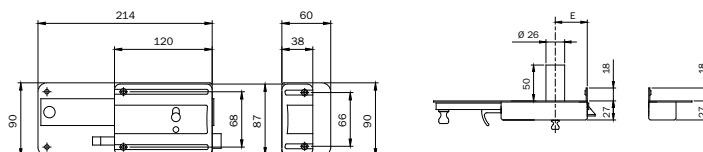
Rim lock for wooden frames, with internal unlatching knob and **EXTERNAL DETACHED CYLINDER, separate latchbolt with external deadlocking by key.**

6-THROW LATCHBOLT. Keep. Screws.

Backset mm 50	340506	B	2	10	10
Backset mm 60	340606	B	2	10	10
Backset mm 70	340706	C	2	10	10



Key blank
020259



Rim lock for wooden frames, with internal unlatching knob and **EXTERNAL FIXED CYLINDER D mm 26x50, separate latchbolt with external deadlocking by key.**

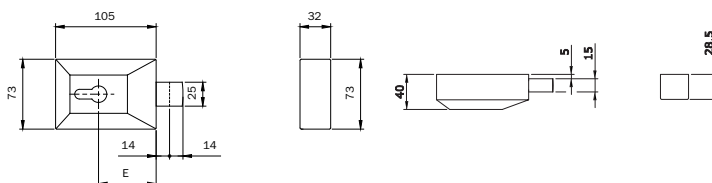
6-THROW LATCHBOLT. Keep. Screws.

Backset mm 50	350506	D	2	10	10
Backset mm 60	350606	C	2	10	10
Backset mm 70	350706	D	2	10	10

Code
Status
Single package
Multiple package
Min. ord.



Cylinder to be ordered separately

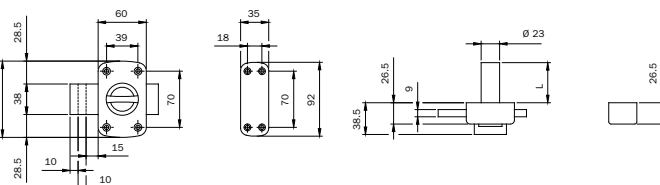


Rim lock for wooden frames, **BOTH RIGHT- AND LEFT HAND**. Operating with European-profile cylinder 2 throws. Backset mm 60. Keep. Cylinder escutcheon with antidrill protection. Brackets, spacers. Screws. Assembly template.

Painted gold	410601	D	1	6	6
Painted bronze	410602	C	1	6	6
Painted grey	410603	D	1	6	6
Painted white	410604	C	1	6	6
Painted black	410605	D	1	6	6

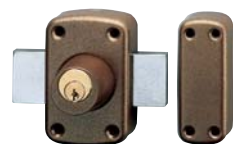


Key blank 020259

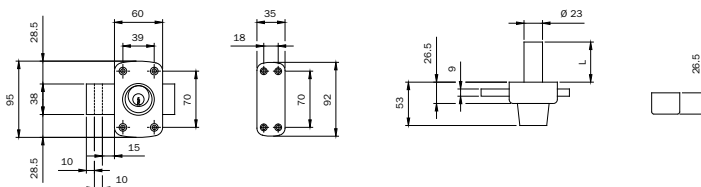


Rim lock for wooden frames, **BOTH RIGHT- AND LEFT HAND**. Internal knob and external cylinder D. 26. Two mm 10 throws. Keep, cylinder escutcheon, assembly template, fixing screws, **3 KEYS**.

Cylinder length mm 30	460300	D	1	10	10
Cylinder length mm 30 keyed alike	460300..5	D	1	-	-
Cylinder length mm 40	460400	D	1	10	10
Cylinder length mm 40 keyed alike	460400..5	D	1	-	-
Cylinder length mm 45	460450	C	1	10	10
Cylinder length mm 45 keyed alike	460450..5	D	1	-	-
Cylinder length mm 50	460500	B	1	10	10
Cylinder length mm 50 keyed alike	460500..5	D	1	-	-
Cylinder length mm 60	460600	D	1	10	10
Cylinder length mm 60 keyed alike	460600..5	D	1	-	-



Key blank 020259

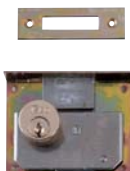


Rim lock for wooden frames, painted, **BOTH RIGHT- AND LEFT HAND**. Internal knob and external cylinder D. 26. Two mm 10 throws. Keep, cylinder escutcheon, assembly template, fixing screws, **3 KEYS**.

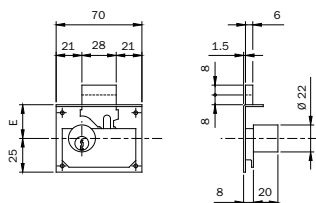
Cylinder length mm 30	470300	D	1	10	10
Cylinder length mm 30 keyed alike	470300..5	D	1	-	-
Cylinder length mm 40	470400	D	1	10	10
Cylinder length mm 40 keyed alike	470400..5	D	1	-	-
Cylinder length mm 45	470450	D	1	10	10
Cylinder length mm 45 keyed alike	470450..5	D	1	-	-
Cylinder length mm 50	470500	C	1	10	10
Cylinder length mm 50 keyed alike	470500..5	D	1	-	-
Cylinder length mm 60	470600	D	1	10	10
Cylinder length mm 60 keyed alike	470600..5	D	1	-	-

Code
Status
Single
package
Multiple
package
Min. ord.

Furniture locks

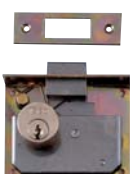


Key blank
020149

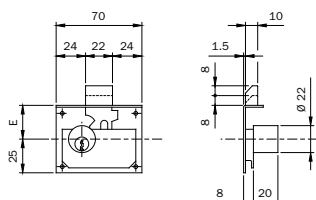


BUILT-IN FURNITURE lock, zinc-plated case, brass cylinder D mm 22x20. Escutcheon and striking plate.

Backset mm 25. 1 throw	100251	D	10	-	10
Backset mm 30. 2 throws	100301	C	10	-	10
Backset mm 35. 2 throws	100351	D	10	-	10
Backset mm 40. 2 throws	100401	C	10	-	10
Backset mm 45. 2 throws	100451	D	10	-	10
Backset mm 50. 2 throws	100501	D	10	-	10

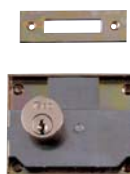


Key blank
020149

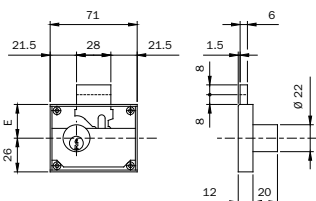


BUILT-IN FURNITURE lock, zinc-plated case, brass cylinder D mm 22x20. Escutcheon and striking plate.

Backset mm 30. 1 throw with built-in latchbolt	101301	D	10	-	10
Backset mm 35. 1 throws with built-in latchbolt	101351	D	10	-	10
Backset mm 45. 1 throws with built-in latchbolt	101451	D	10	-	10
Backset mm 50. 1 throws with built-in latchbolt	101501	D	10	-	10



Key blank
020149

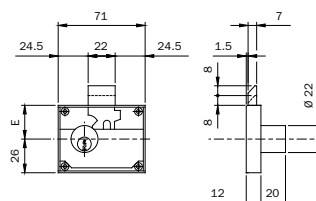


BUILT-IN FURNITURE lock, zinc-plated case, brass cylinder D mm 22x20. Escutcheon and striking plate.

Backset mm 25. 1 throw	102251	D	10	-	10
Backset mm 30. 2 throws	102301	A	10	-	10
Backset mm 35. 2 throws	102351	D	10	-	10
Backset mm 40. 2 throws	102401	D	10	-	10
Backset mm 45. 2 throws	102451	D	10	-	10
Backset mm 50. 2 throws	102501	D	10	-	10



Key blank
020149



BUILT-IN FURNITURE lock, zinc-plated case, brass cylinder D mm 22x20. Escutcheon and striking plate.

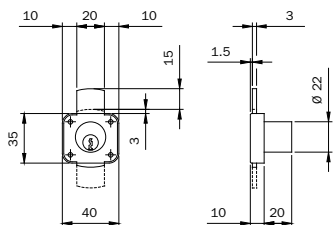
Backset mm 30. 1 throw with built-in latchbolt	103301	A	10	-	10
Backset mm 35. 1 throw with built-in latchbolt	103351	D	10	-	10

Code
Status
Single
package
Multiple
package
Min. ord.

Furniture locks



Key blank
020149

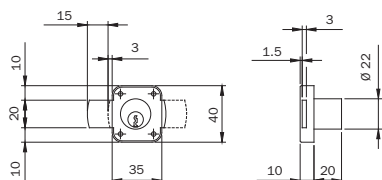


Rim lock for **DRAWER AND VERTICAL WING**, zinc-plated case.
Escutcheon. Key removal when locked. Brass cylinder D mm 22x20
nickel-plated brass cylinder D mm 22x20
zinc-plated cylinder D mm 22x20

106214	B	10	-	10
106219	D	10	-	10



Key blank
020149

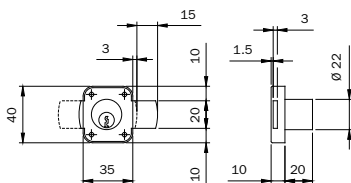


Rim lock for right-hand, zinc-plated case. Escutcheon. Key removal when locked.
brass cylinder D mm 22x20
zinc-plated cylinder D mm 22x20

107214	B	10	-	10
107219	D	10	-	10



Key blank
020149



Rim lock for **LEFT-HAND WING**, zinc-plated case. Escutcheon. Key removal when locked.
brass cylinder D mm 22x20
zinc-plated cylinder D mm 22x20

108214	C	10	-	10
108219	D	10	-	10

Code
Status
Single package
Multiple package
Min. ord.

Accessories



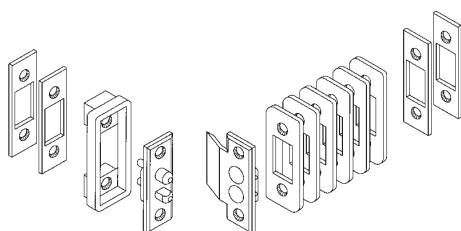
Pair of standard coils **12V-15W A.C.** For rim lock series 500-505-510.

050020 B 10 - 10



Pair of standard coils **12V-15W A.C.** For rim locks series 52**-53**.

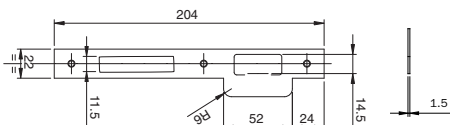
050035 A 10 - 10



Pair of pressure electrical contacts **FOR 12V ELECTRIC LOCKS**. Six spacers mm 2x22.

Four spacers mm 2x16. One spacer mm 5. Instructions.

050060 A 10 - 10



Flat striking plate, square edge, with blade for locks for wooden frames series 200-221-240-250.

BRASS-PLATED STEEL mm 204x22x1,5

032011 B 10 - 10

GOLD PAINTED STEEL mm 204x22x1,5

032016 B 10 - 10

BRASS mm 204x22x1,5

032017 D 10 - 10

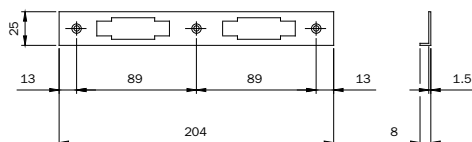
Flat striking plate, square edge, with blade for locks for wooden frames series 205, convex deadbolt.

BRASS-PLATED STEEL mm 204x22x1,5

032211 D 10 - 10

GOLD PAINTED STEEL mm 204x22x1,5

032216 D 10 - 10



Angle striking plate for locks for wooden frames series 200-221-240-250.

BRASS-PLATED STEEL mm 204x25x8x1,5

032021 D 10 - 10

GOLD PAINTED STEEL mm 204x25x8x1,5

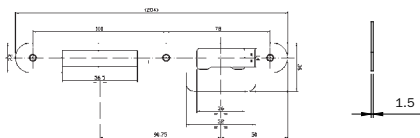
032026 D 10 - 10

BRASS mm 204x25x8x1,5.

032027 D 10 - 10

Code
Status
Single
package
Multiple
package
Min. ord.

Accessories

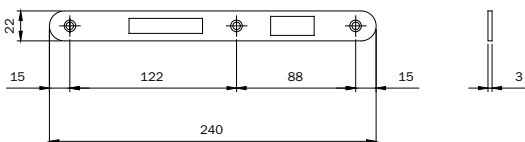


Flat striking plate, round edge, with blade for locks for wooden frames series 210-231.

BRASS-PLATED STEEL mm 204x22x1,5	032031	D	10	-	10
GOLD PAINTED STEEL mm 204x22x1,5	032036	D	10	-	10
BRASS mm 204x22x1,5	032037	D	10	-	10

Flat striking plate, round edge, with blade for locks for wooden frames series 215, convex deadbolt.

BRASS-PLATED STEEL mm 204x22x1,5	032231	D	10	-	10
GOLD-PAINTED STEEL mm 204x22x1,5	032236	D	10	-	10

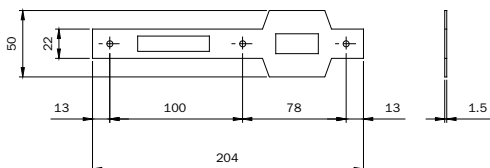


Flat, heavy striking plate for locks for wooden frames series 210-231.

BRASS-PLATED STEEL mm 24 0x22x3	032051	D	10	-	10
GOLD PAINTED STEEL mm 24 0x22x3	032056	D	10	-	10
BRASS mm 24 0x22x3	032057	D	10	-	10

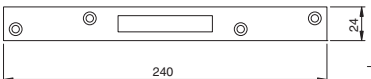
Flat, heavy striking plate, round edge, for locks for wooden frames series 215.

BRASS-PLATED STEEL mm 24 0x22x3	032251	D	10	-	10
GOLD PAINTED STEEL mm 24 0x22x3	032256	D	10	-	10



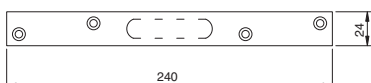
Flat striking plate, square edge, with double blade for roller locks for wooden frames series 280.

BRASS-PLATED STEEL mm 204x22x1,5	032111	D	10	-	10
---	---------------	---	----	---	----



Striking plate for locks series 261, rectangular latchbolt.

BRASS-PLATED STEEL mm 240x25x3	990818	D	10	-	10
BRASS mm 240x25x3 for locks series 261 with rectangular latchbolt	990819	D	10	-	10

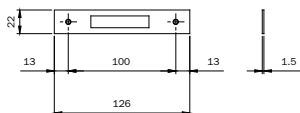


Flat, heavy striking plate, square edge, for locks for wooden frames series 261601.4

Latchbolt with 4 loading springs D mm 12. BRASS-PLATED STEEL mm 240x24x3	032041	D	10	-	10
---	---------------	---	----	---	----

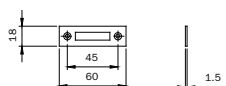
Code
Status
Single
package
Multiple
package
Min. ord.

Accessories

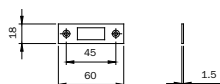


Flat striking, square edge, for locks for wooden frames with latchbolt only series 201.

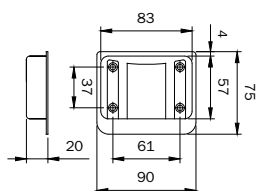
BRASS-PLATED mm 126x22x1,5	032071	D	10	-	10
GOLD-PAINTED STEEL mm 126x22x1,5	032076	D	10	-	10



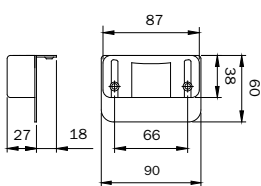
Flat, BRASS-PLATED STEEL striking plate. For furniture locks series 100-102.	045301	D	50	-	50
---	---------------	---	----	---	----



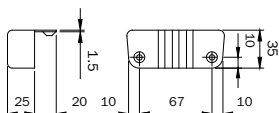
Flat, BRASS-PLATED STEEL striking plate. For furniture locks series 101-103.	045311	D	50	-	50
---	---------------	---	----	---	----



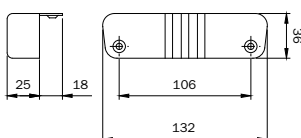
PAINTED STEEL keep. Standard version for series 300-310-320-330.	035015	D	10	-	10
---	---------------	---	----	---	----



PAINTED STEEL keep. Standard version for series 340-350.	035025	D	10	-	10
---	---------------	---	----	---	----



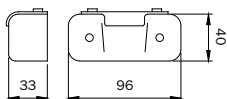
PAINTED STEEL keep. Standard version for main door series 401-411-421-431-437-451.					
right-hand	035035	D	10	-	10
left-hand	035036	D	10	-	10



PAINTED STEEL keep. Standard version for main door series 4250-4350-4950.					
right-hand	035037	D	10	-	10
left-hand	035038	D	10	-	10

Code
Status
Single
package
Multiple
package
Min. ord.

Accessories



Right- and left-hand keep for electric locks series 505. **ZINC-PLATED STEEL.**

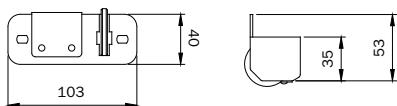
STAINLESS STEEL sliding plate.

050004 D 10 - 10

Right- and left-hand keep for electric locks series 500-501-510-511. **PAINTED STEEL.**

STAINLESS STEEL sliding plate.

050005 D 10 - 10



Keep with blades for electric locks series 5210-5211-5213-5214.

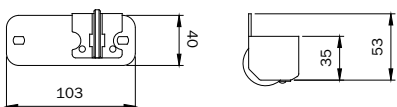
PAINTED STEEL. STAINLESS STEEL sliding plate.

right-hand

050102 D 5 - 5

left-hand

050103 D 5 - 5



Keep with blades for electric locks series 5310-5312-5314.

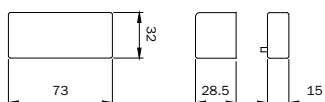
PAINTED STEEL. STAINLESS STEEL sliding plate.

right-hand

050122 D 5 - 5

left-hand

050123 D 5 - 5



Lateral keep. Zinc-plated steel bracket. Zamak cover and spacer mm 15 .

For locks series 400-410.

GOLD-PAINTED ZAMAK

042091 D 1 - 1

BRONZE-PLATED ZAMAK

042092 D 1 - 1

GREY-PAINTED ZAMAK

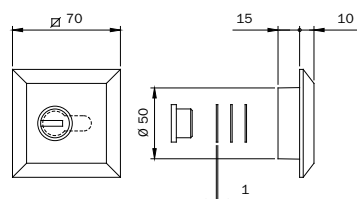
042093 D 1 - 1

WHITE-PAINTED ZAMAK

042094 D 1 - 1

BLACK-PAINTED ZAMAK

042095 D 1 - 1



Escutcheon with **ANTI-DRILL DISK**. For locks series 400-410.

GOLD-PAINTED ZAMAK

042071 D 1 - 1

BRONZE-PLATED ZAMAK

042072 D 1 - 1

GREY-PAINTED ZAMAK

042073 D 1 - 1

WHITE-PAINTED ZAMAK

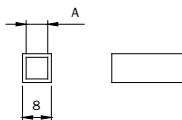
042074 D 1 - 1

BLACK-PAINTED ZAMAK

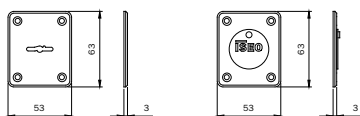
042075 D 1 - 1

Code
Status
Single
package
Multiple
package
Min. ord.

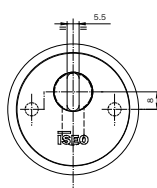
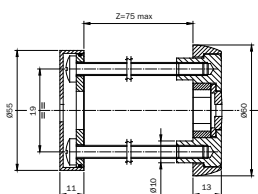
Accessories



Reduction for handle follower from mm 8 to mm 6.	040860	B 100	- 100
Reduction for handle follower from mm 8 to mm 7.	040870	D 100	- 100



Pair of BRASS key guides for locks series 261.	990312	D 10	- 10
---	---------------	------	------



	KEY	L	KEY	L
		0 + 12.5		5 + 12.5
		0 + 12.5		7 + 12.5
				2 + 12.5

Protection escutcheon for European cylinder , inside fixing. **IN CARBONITRIDED STEEL, BRASS-PLATED** and **TRANSPARENT PAINT**. External protection plate.
External escutcheon. **ANTIDRILL DISK**.

Disk spacer. Spacing ring. Internal plate. Internal escutcheon. Gasket. Fixing screws.	043030	C 1	- 1
--	---------------	-----	-----

