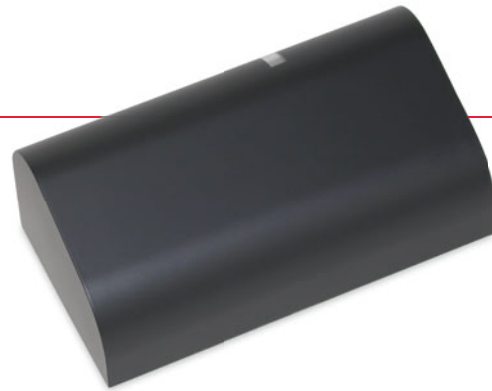


sensing the future

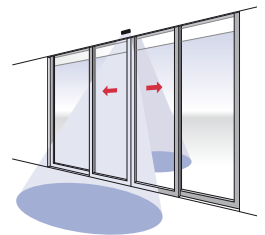


ArtMotion 2

Microwave motion detector
for automatic doors

Simple, reliable, practical

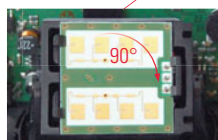
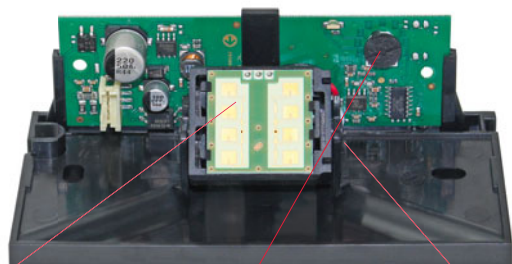
ArtMotion 2 is a simple microwave motion detector in an elegant, small housing



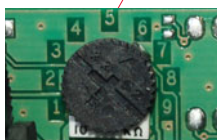
- **Practical and versatile:**
One device, also for particularly tall and wide doors
- **Wide range of applications:**
The adjustable field geometry and the radar module that can be tilted mean the door activation can be optimally adjusted to the flow of persons traffic
- **Short startup:**
Quick and easy startup with potentiometer

ArtMotion 2

This is how easy it is to install the detector



The motion field pattern (wide or narrow) can be changed by rotating the microwave module



Potentiometer for field settings



Adjustment of the inclination angle

Reliable in many applications

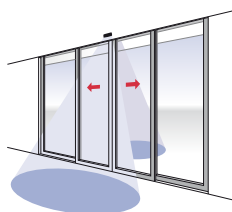
ArtMotion 2 ensures an optimum flow of people because of its ideal activation of automatic sliding doors.

Situation

Activating sliding doors

Advantage

- Reliable detection even with tall doors because of the possible installation height up to 4 m

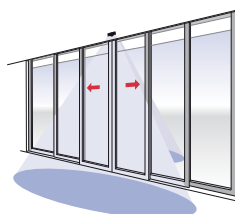


Situation

Activating telescopic sliding doors

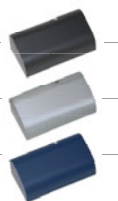
Advantage

- The max. field width of 4.8 m means one detector is sufficient on each side of the door, even with wide doors



Order details

Article no.	Description
351081	ArtMotion 2 bk Microwave motion detector black
351083	ArtMotion 2 si Microwave motion detector silver
351082	ArtMotion 2 bl Microwave motion detector blue



Supplementary products

PrimeTec B / PrimeScan B

The reliable solution for activating and protecting sliding doors in accordance with EN 16005

TopScan

The infrared detector prevents collisions with automatic swing and revolving door



Mechanical data

Material	ABS / PA
Weight (without cable)	95 g
Dimensions	120 x 60 x 48 mm (L x W x D)
Connection type	cable 3 m long, Ø 3.5 mm, with plug
Mounting height	1.8–4 m
Colour	black / silver / blue

Technological data

Technology	Radar
Transmitting frequency	24.125 GHz
Field size at 2.2 m	min. 0.8 x 1.6 m max. 2.3 x 4.8 m

Electrical data

Operating voltage	12–36 V DC / 12–28 V AC
Current consumption	≤ 32 mA at 24 V DC
Output	solid state relay, bidirectional 1 s fall-delay time fixed
Switching voltage	max. 48 V AC / VDC
Switching current	max. 120 mA
Switching capacity	max. 550 mW

Ambient conditions

Protection class	IP54
Operating temperature	–20°C to +60°C
Air humidity	<90%, rel., non-condensing

Electromagnetic compatibility standards

Immision	EN 61000-6-2
Emission	EN 61000-6-3

Note

Technical details and recommendations concerning our products are based on experience and are an aid for the orientation of the user. Details stated in our brochures and data sheets do not guarantee special properties of the products. This does not apply to special product properties confirmed by us in writing or individually. Subject to technical alterations.

Swissdoor ApS • Stenhuggervej 2 • 5471 Sønderød • Danmark
Telefon +45 86 28 00 00 • mail@swissdoor.dk • www.swissdoor.dk

Bircher Reglomat AG

Wiesengasse 20
CH-8222 Beringen
Phone +41 52 687 11 11
Fax +41 52 687 11 12
info@bircher.com
www.bircher-reglomat.com